

Trunnion mounting, Series MT1, MT2

R432013516

Trunnion
mountings

2023-10-26

AVENTICS Trunnion mountings



Technical data

Industry

Industrial

For series

TaskMaster®

Piston diameter

101.6 mm

Weight

0.9434 kg

Material

Housing material

Die-cast aluminum

Screws material

steel, galvanized

Material guide bushing

steel, galvanized

Part No.

R432013516

Fig. 2

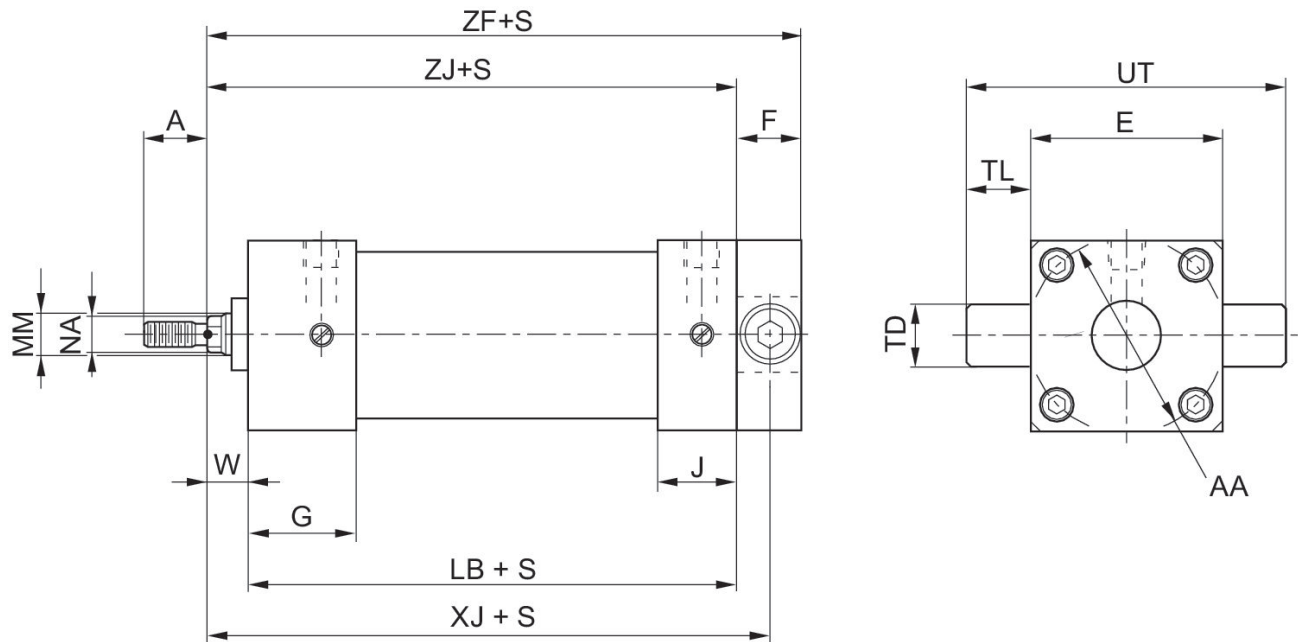
Trunnion mounting, Series MT1, MT2

R432013516

Trunnion
mountings

2023-10-26

MT2, rear end cover



S = stroke

Dimensions in inches

| ∅ | Part No. | MM | E | F | W | AA | LB | TD | TL |
|------|------------|-------|------|------|------|------|------|------|------|
| 1.5 | R432013510 | 0.625 | 2.00 | 1.00 | 1.38 | 2.02 | 3.98 | 1.00 | 1.00 |
| 2.0 | R432013507 | 0.625 | 2.5 | 1.00 | 1.38 | 2.6 | 3.98 | 1.00 | 1.00 |
| 2.5 | R432013513 | 0.625 | 3.00 | 1.00 | 1.38 | 3.1 | 4.1 | 1.00 | 1.00 |
| 3.25 | R432013489 | 1.00 | 3.75 | 1.00 | 1.5 | 3.90 | 4.86 | 1.00 | 1.00 |
| 4.0 | R432013516 | 1.00 | 4.50 | 1.00 | 1.5 | 4.70 | 4.86 | 1.00 | 1.00 |

| ∅ | UT | XJ | ZF | ZJ |
|------|------|------|------|------|
| 1.5 | 4.00 | 5.1 | 5.63 | 4.6 |
| 2.0 | 4.5 | 5.1 | 5.63 | 4.6 |
| 2.5 | 5.00 | 5.22 | 5.75 | 4.72 |
| 3.25 | 5.77 | 6.11 | 6.63 | 5.61 |
| 4.0 | 6.49 | 6.11 | 5.63 | 5.61 |

Fig. 1

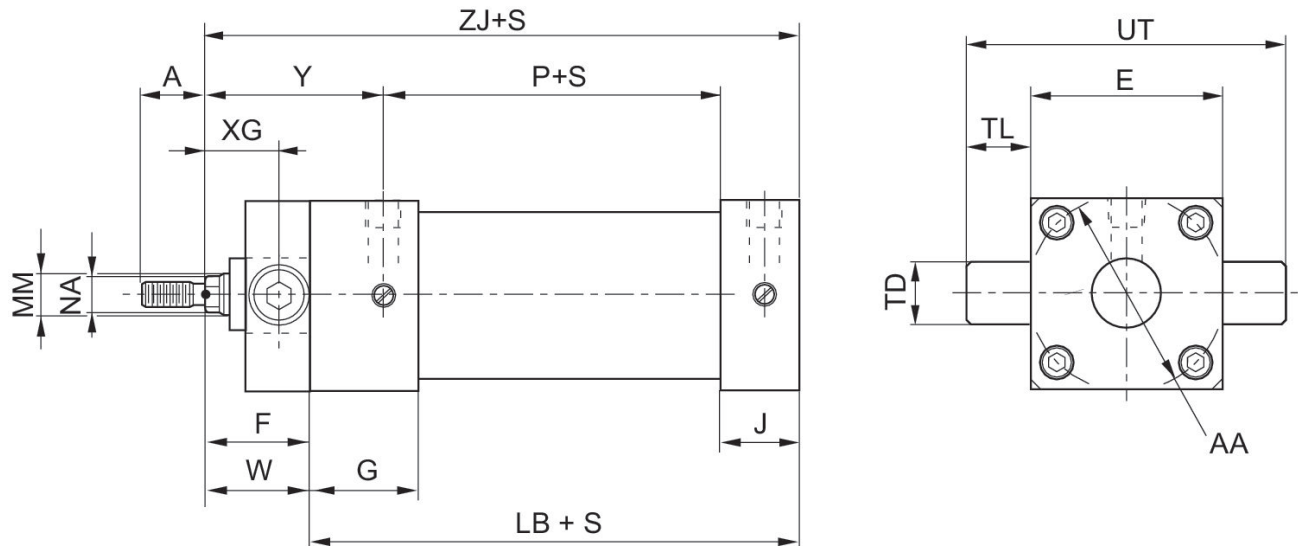
Trunnion mounting, Series MT1, MT2

R432013516

Trunnion
mountings

2023-10-26

MT1, front end cover



S = stroke

Dimensions in inches

| Ø | Part No. | MM | E | F | W | AA | LB | TD | TL |
|------|------------|-------|------|------|------|------|------|------|------|
| 1.5 | R432013510 | 0.625 | 2.00 | 1.00 | 1.38 | 2.02 | 3.98 | 1.00 | 1.00 |
| 2.0 | R432013507 | 0.625 | 2.5 | 1.00 | 1.38 | 2.6 | 3.98 | 1.00 | 1.00 |
| 2.5 | R432013513 | 0.625 | 3.00 | 1.00 | 1.38 | 3.1 | 4.1 | 1.00 | 1.00 |
| 3.25 | R432013489 | 1.00 | 3.75 | 1.00 | 1.5 | 3.90 | 4.86 | 1.00 | 1.00 |
| 4.0 | R432013516 | 1.00 | 4.50 | 1.00 | 1.5 | 4.70 | 4.86 | 1.00 | 1.00 |

| Ø | UT | XG | ZJ |
|------|------|------|------|
| 1.5 | 4.00 | 0.12 | 5.6 |
| 2.0 | 4.5 | 0.12 | 5.6 |
| 2.5 | 5.00 | 0.12 | 5.72 |
| 3.25 | 5.77 | 0.25 | 6.61 |
| 4.0 | 6.49 | 0.25 | 6.61 |