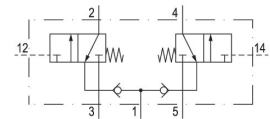


5811830100

ISO 5599-1, size 1, series 581

Qn = 1400 l/min

* Note: ATEX version can be produced by combining the basic valve without coil with a series DO30 CNOMO pilot valve and an ATEX coil. ATEX ID: see ATEX coils catalog page.



Technical data

Industry

Activation

Switching principle

Connection type

Nominal flow Qn

Compressed air connection output

Min. working pressure

Max. working pressure

Sealing principle

ATEX

Standards

Valve type

Version

Can be assembled into blocks

Blocking principle

Min. control pressure

Max. control pressure

Industrial

Pneumatically

2x 3/2 NC/NC, with spring return

Plate connection

950 l/min

Base plate ISO 5599-1

0 bar

8 bar

Soft seal

ATEX

II 2G Ex h IIC T6 Gb

II 2D Ex h IIIC T85°C Db IP65

ISO 5599-1

Spool valve

ISO 1

Can be assembled into blocks

Single base plate principle

3.5 bar

8 bar

2x3/2-directional valve, Series 581, size 1

2023-11-28

5811830100

Min. ambient temperature	-20 °C
Max. ambient temperature	70 °C
Min. medium temperature	-20 °C
Max. medium temperature	70 °C
Medium	Compressed air
Max. particle size	50 µm
Min. oil content of compressed air	0 mg/m ³
Max. oil content of compressed air	5 mg/m ³
version pneumatic port	NC/NC
Compressed air connection input	Base plate ISO 5599-1
Flow conductance C	4.2 l/(s*bar)
Mounting screw	with hexagon socket
Mounting screw tightening torque	2 Nm
Weight	0.21 kg
Housing material	Aluminum
Seal material	Acrylonitrile butadiene rubber
Part No.	5811830100

Technical information

The min. control pressure must be adhered to, since otherwise faulty switching and valve failure may result!

The pressure dew point must be at least 15 °C less than ambient and medium temperature and may not exceed 3 °C.

The oil content of compressed air must remain constant during the life cycle.

Use only the approved oils from AVENTICS. Further information can be found in the "Technical information" document (available in <https://www.emerson.com/en-us/support>).

Dimensions

