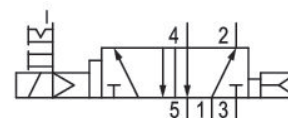
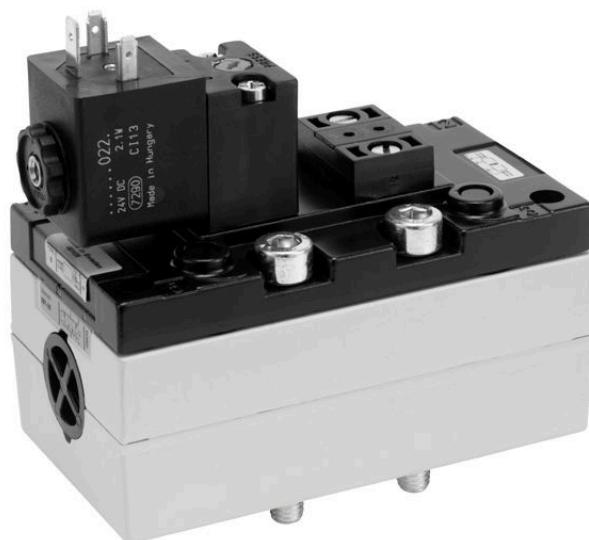


5/2-directional valve, Series 581, size 3

5813670650

ISO 5599-1, size 3, series 581

- $Q_n = 4100 \dots 4800 \text{ l/min}$



Technical data

Industry
Industrial

Activation
Electrically

Nominal flow Q_n
4800 l/min

Switching principle
5/2

Compressed air connection output
Base plate ISO 5599-1

Working pressure min.
1.5 bar

Working pressure max
10 bar

DC operating voltage
24 V

Voltage tolerance DC
-10% / +10%

Manual override
with detent
without detent

Electrical connection type
Plug

Electrical connection size
EN 175301-803, form A

Sealing principle
Soft Seal

Pilot
Internal

Standards
ISO 5599-1

Pilot valve width
30x22 mm CNOMO

Valve type
Spool valve

Blocking principle
Single base plate principle

Connection type
Plate connection

Return
with air spring return

Compressed air connection input
Base plate ISO 5599-1

Compressed air connection, exhaust Base plate ISO 5599-1	Oil content of compressed air min. 0 mg/m ³
Compressed air connection pilot exhaust M5	Oil content of compressed air max. 5 mg/m ³
Power consumption DC 2 W	Protection class with connection IP65
Flow conductance C 18.9 l/(s*bar)	Compatibility index 14
Frame size ISO 3	Duty cycle 100 %
Control pressure min. 1.5 bar	Typ. switch-on time 24 ms
Control pressure max. 10 bar	Typ. switch-off time 66 ms
Min. ambient temperature -15 °C	mounting screws with hexagon socket
Max. ambient temperature 50 °C	Mounting screw tightening torque 10 Nm
Min. medium temperature -15 °C	Weight 0.99 kg
Max. medium temperature 50 °C	Housing material Aluminum
Medium Compressed air	Seal material Acrylonitrile butadiene rubber
Max. particle size 50 µm	Part No. 5813670650

Technical information

Differential piston, signal 14 has priority

The minimum pilot pressure at port 14 is dependent on the pressure in port 1.

The min. control pressure must be adhered to, since otherwise faulty switching and valve failure may result!

The pressure dew point must be at least 15 °C under ambient and medium temperature and may not exceed 3 °C .

The oil content of compressed air must remain constant during the life cycle.

Use only the approved oils from AVENTICS. Further information can be found in the “Technical information” document (available in <https://www.emerson.com/en-us/support>).

Dimensions

