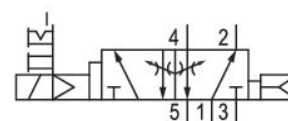


# 5/2-directional valve, Series 581, size 4

## 5814671450

ISO 5599-1, size 4, series 581

- $Q_n = 5000 \dots 6000 \text{ l/min}$



### Technical data

Industry

Industrial

Activation

Electrically

Nominal flow  $Q_n$

6000 l/min

Switching principle

5/2

Compressed air connection output

Base plate ISO 5599-1

Working pressure min.

1.5 bar

Working pressure max

10 bar

Operational voltage AC at 50 Hz

230 V

Voltage tolerance AC 50 Hz

-10% / +10%

Manual override

with detent

without detent

Electrical connection type

Plug

Electrical connection size

EN 175301-803, form A

Sealing principle

Soft Seal

Pilot

Internal

Standards

ISO 5599-1

Pilot valve width

30x22 mm CNOMO

Valve type

Spool valve

Blocking principle

Single base plate principle

**Connection type**

Plate connection

**Return**

with air spring return

**Compressed air connection input**

Base plate ISO 5599-1

**Compressed air connection, exhaust**

Base plate ISO 5599-1

**Compressed air connection pilot exhaust**

M5

**Holding power AC 50 Hz**

4.8 VA

**Switch-on power AC 50 Hz**

7 VA

**Flow conductance C**

24.5 l/(s\*bar)

**Throttle**

with throttle

**Frame size**

ISO 4

**Control pressure min.**

1.5 bar

**Control pressure max.**

10 bar

**Min. ambient temperature**

-15 °C

**Max. ambient temperature**

50 °C

**Min. medium temperature**

-15 °C

**Max. medium temperature**

50 °C

**Medium**

Compressed air

**Max. particle size**

50 µm

**Oil content of compressed air min.**

0 mg/m<sup>3</sup>

**Oil content of compressed air max.**

5 mg/m<sup>3</sup>

**Protection class with connection**

IP65

**Compatibility index**

14

**Duty cycle**

100 %

**Typ. switch-on time**

33 ms

**Typ. switch-off time**

77 ms

**mounting screws**

with hexagon socket

**Mounting screw tightening torque**

10 Nm

**Weight**

1.4 kg

**Housing material**

Aluminum

**Seal material**

Acrylonitrile butadiene rubber

**Part No.**

5814671450

## Technical information

Differential piston, signal 14 has priority

The minimum pilot pressure at port 14 is dependent on the pressure in port 1.

The min. control pressure must be adhered to, since otherwise faulty switching and valve failure may result!

The pressure dew point must be at least 15 °C under ambient and medium temperature and may not exceed 3 °C .

The oil content of compressed air must remain constant during the life cycle.

Use only the approved oils from AVENTICS. Further information can be found in the “Technical information” document (available in <https://www.emerson.com/en-us/support>).

## Dimensions

