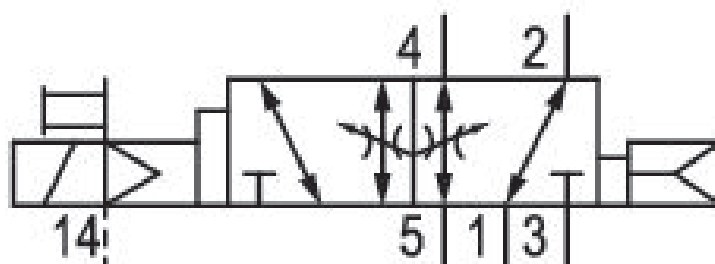


# 5/2-directional valve, Series 581, size 2

## 5812673540

ISO 5599-1, size 2, series 581

- $Q_n = 2100 \dots 2700$  l/min



### Technical data

Industry  
Industrial

Activation  
Electrically

Nominal flow  $Q_n$   
2700 l/min

Switching principle  
5/2

Compressed air connection output  
Base plate ISO 5599-1

Working pressure min.  
-0.95 bar

Working pressure max  
16 bar

DC operating voltage  
24 V

Operational voltage AC at 50 Hz  
42 V

Voltage tolerance DC  
-10% / +10%

Voltage tolerance AC 50 Hz  
-10% / +10%

Manual override  
without detent

Electrical connection type  
Plug

Electrical connection size  
EN 175301-803, form A

<b>Sealing principle</b> Soft Seal	<b>Min. ambient temperature</b> -15 °C
<b>Pilot</b> External	<b>Max. ambient temperature</b> 50 °C
<b>Standards</b> ISO 5599-1	<b>Min. medium temperature</b> -15 °C
<b>Pilot valve width</b> 30x22 mm CNOMO	<b>Max. medium temperature</b> 50 °C
<b>Valve type</b> Spool valve	<b>Medium</b> Compressed air
<b>Blocking principle</b> Single base plate principle	<b>Max. particle size</b> 50 µm
<b>Connection type</b> Plate connection	<b>Oil content of compressed air min.</b> 0 mg/m <sup>3</sup>
<b>Return</b> with air spring return	<b>Oil content of compressed air max.</b> 5 mg/m <sup>3</sup>
<b>Compressed air connection input</b> Base plate ISO 5599-1	<b>Protection class with connection</b> IP65
<b>Compressed air connection, exhaust</b> Base plate ISO 5599-1	<b>Duty cycle</b> 100 %
<b>Compressed air connection pilot exhaust</b> M5	<b>Typ. switch-on time</b> 17 ms
<b>Power consumption DC</b> 6.7 W	<b>Typ. switch-off time</b> 40 ms
<b>Holding power AC 50 Hz</b> 7.7 VA	<b>mounting screws</b> with hexagon socket
<b>Switch-on power AC 50 Hz</b> 12 VA	<b>Mounting screw tightening torque</b> 3.5 Nm
<b>Flow conductance C</b> 10.8 l/(s*bar)	<b>Weight</b> 0.56 kg
<b>Throttle</b> with throttle	<b>Housing material</b> Aluminum
<b>Frame size</b> ISO 2	<b>Seal material</b> Acrylonitrile butadiene rubber
<b>Control pressure min.</b> 2.7 bar	<b>Part No.</b> 5812673540
<b>Control pressure max.</b> 16 bar	

## Technical information

The min. control pressure must be adhered to, since otherwise faulty switching and valve failure may result!

The pressure dew point must be at least 15 °C under ambient and medium temperature and may not exceed 3 °C .

The oil content of compressed air must remain constant during the life cycle.

Use only the approved oils from AVENTICS. Further information can be found in the “Technical information” document (available in <https://www.emerson.com/en-us/support>).

## Dimensions

