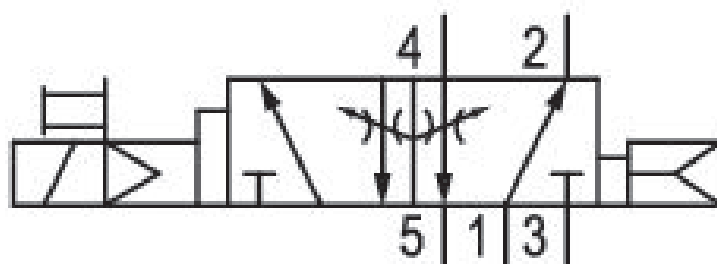


# 5/2-directional valve, Series 581, size 4

## 5814671540

ISO 5599-1, size 4, series 581

- $Q_n = 5000 \dots 6000 \text{ l/min}$



### Technical data

Industry  
Industrial

Activation  
Electrically

Nominal flow  $Q_n$   
6000 l/min

Switching principle  
5/2

Compressed air connection output  
Base plate ISO 5599-1

Working pressure min.  
1.5 bar

Working pressure max  
16 bar

DC operating voltage  
24 V

Operational voltage AC at 50 Hz  
42 V

Voltage tolerance DC  
-10% / +10%

Voltage tolerance AC 50 Hz  
-10% / +10%

Manual override  
without detent

Electrical connection type  
Plug

Electrical connection size  
EN 175301-803, form A

### Sealing principle

Soft Seal

### Pilot

Internal

### Standards

ISO 5599-1

### Pilot valve width

30x22 mm CNOMO

### Valve type

Spool valve

### Blocking principle

Single base plate principle

### Connection type

Plate connection

### Return

with air spring return

### Compressed air connection input

Base plate ISO 5599-1

### Compressed air connection, exhaust

Base plate ISO 5599-1

### Compressed air connection pilot exhaust

M5

### Power consumption DC

6.7 W

### Holding power AC 50 Hz

7.7 VA

### Switch-on power AC 50 Hz

12 VA

### Flow conductance C

24.5 l/(s\*bar)

### Throttle

with throttle

### Frame size

ISO 4

### Control pressure min.

1.5 bar

### Control pressure max.

16 bar

### Min. ambient temperature

-15 °C

### Max. ambient temperature

50 °C

### Min. medium temperature

-15 °C

### Max. medium temperature

50 °C

### Medium

Compressed air

### Max. particle size

50 µm

### Oil content of compressed air min.

0 mg/m<sup>3</sup>

### Oil content of compressed air max.

5 mg/m<sup>3</sup>

### Protection class with connection

IP65

### Duty cycle

100 %

### Typ. switch-on time

33 ms

### Typ. switch-off time

77 ms

### mounting screws

with hexagon socket

### Mounting screw tightening torque

10 Nm

### Weight

1.4 kg

### Housing material

Aluminum

### Seal material

Acrylonitrile butadiene rubber

### Part No.

5814671540

## Technical information

The min. control pressure must be adhered to, since otherwise faulty switching and valve failure may result!

The pressure dew point must be at least 15 °C under ambient and medium temperature and may not exceed 3 °C .

The oil content of compressed air must remain constant during the life cycle.

Use only the approved oils from AVENTICS. Further information can be found in the "Technical information" document (available in <https://www.emerson.com/en-us/support>).

## Dimensions

