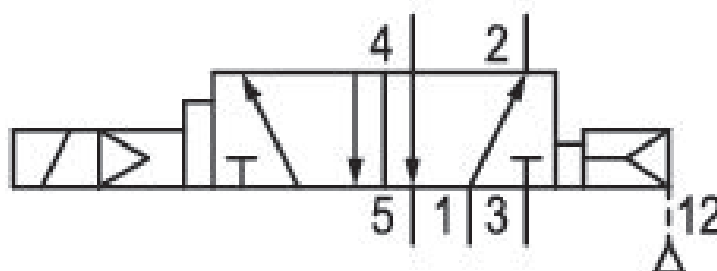


5/2-directional valve, Series 581, size 4

5814680100

ISO 5599-1, size 4, series 581

- $Q_n = 5000 \dots 6000 \text{ l/min}$



Technical data

Industry
Industrial

Activation
Electrically

Nominal flow Q_n
6000 l/min

Switching principle
5/2

Compressed air connection output
Base plate ISO 5599-1

Working pressure min.
-0.95 bar

Working pressure max
16 bar

Sealing principle
Soft Seal

Pilot
External
Internal

Certificates
ATEX

ATEX
ATEX

II 2G Ex h IIC T6 Gb
II 2D Ex h IIIC T85°C Db IP65

Standards
ISO 5599-1

Pilot valve width
30 mm

Valve type	Medium
Spool valve	Compressed air
Blocking principle	Max. particle size
Single base plate principle	50 µm
Connection type	Oil content of compressed air min.
Plate connection	0 mg/m ³
Return	Oil content of compressed air max.
with air spring return	5 mg/m ³
Flow conductance C	Standard compressed air connection
24.5 l/(s*bar)	according to ISO 5599
basic valve with electrical connector	Protection class with connection
Basic valve without pilot valve	IP65
Frame size	Duty cycle
ISO 4	100 %
Control pressure min.	mounting screws
1.5 bar	with hexagon socket
Control pressure max.	Mounting screw tightening torque
16 bar	10 Nm
Min. ambient temperature	Weight
-20 °C	1.28 kg
Max. ambient temperature	Housing material
70 °C	Aluminum
Min. medium temperature	Seal material
-20 °C	Acrylonitrile butadiene rubber
Max. medium temperature	Part No.
70 °C	5814680100

Technical information

* Note: ATEX version can be produced by combining the basic valve without coil with a series DO30 CNOMO pilot valve and an ATEX coil. ATEX ID: see ATEX coils catalog page.

For internal pilot the working pressure min/max is the same as the control pressure min/max.

Differential piston, signal 14 has priority

The min. control pressure must be adhered to, since otherwise faulty switching and valve failure may result!

The pressure dew point must be at least 15 °C under ambient and medium temperature and may not exceed 3 °C .

The oil content of compressed air must remain constant during the life cycle.

Use only the approved oils from AVENTICS. Further information can be found in the "Technical information" document (available in <https://www.emerson.com/en-us/support>).

Dimensions

