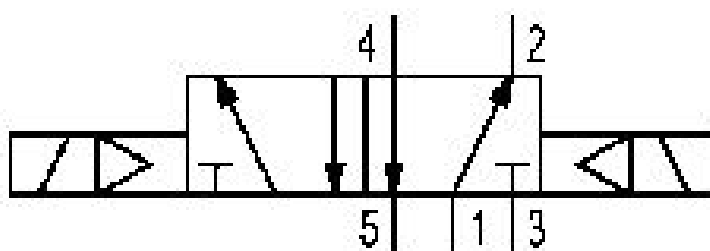


5/2-directional valve, Series 581, size 4

5814280100

ISO 5599-1, size 4, series 581

■ $Q_n = 5000 \dots 6000 \text{ l/min}$



Technical data

Industry
Industrial

Activation
Electrically

Nominal flow Q_n
6000 l/min

Switching principle
5/2

Compressed air connection output
Base plate ISO 5599-1

Working pressure min.
-0.95 bar

Working pressure max
16 bar

Actuating control
Double Solenoid

Sealing principle
Soft Seal

Pilot
External
Internal

ATEX
ATEX
II 2G Ex h IIC T6 Gb
II 2D Ex h IIIC T85°C Db IP65

Standards
ISO 5599-1
Pilot valve width
30 mm

Valve type Spool valve	Max. particle size 50 µm
Blocking principle Single base plate principle	Oil content of compressed air min. 0 mg/m ³
Connection type Plate connection	Oil content of compressed air max. 5 mg/m ³
Flow conductance C 24.5 l/(s*bar)	Standard compressed air connection according to ISO 5599
basic valve with electrical connector Basic valve without pilot valve	Protection class with connection IP65
Frame size ISO 4	Duty cycle 100 %
Control pressure min. 1.5 bar	mounting screws with hexagon socket
Control pressure max. 16 bar	Mounting screw tightening torque 10 Nm
Min. ambient temperature -20 °C	Weight 1.28 kg
Max. ambient temperature 70 °C	Housing material Aluminum
Min. medium temperature -20 °C	Seal material Acrylonitrile butadiene rubber
Max. medium temperature 70 °C	Part No. 5814280100
Medium Compressed air	

Technical information

* Note: ATEX version can be produced by combining the basic valve without coil with a series DO30 CNOMO pilot valve and an ATEX coil. ATEX ID: see ATEX coils catalog page.

The min. control pressure must be adhered to, since otherwise faulty switching and valve failure may result!

The pressure dew point must be at least 15 °C under ambient and medium temperature and may not exceed 3 °C .

The oil content of compressed air must remain constant during the life cycle.

Use only the approved oils from AVENTICS. Further information can be found in the “Technical information” document (available in <https://www.emerson.com/en-us/support>).

Dimensions

