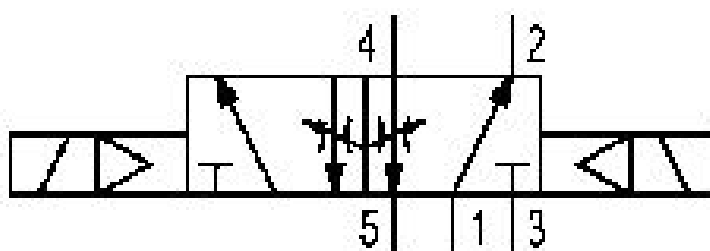


# 5/2-directional valve, Series 581, size 4

## 5814281000

ISO 5599-1, size 4, series 581

■  $Q_n = 5000 \dots 6000 \text{ l/min}$



### Technical data

Industry

Industrial

Activation

Electrically

Nominal flow  $Q_n$

6000 l/min

Switching principle

5/2

Compressed air connection output

Base plate ISO 5599-1

Working pressure min.

-0.95 bar

Working pressure max

16 bar

Actuating control

Double Solenoid

Sealing principle

Soft Seal

Pilot

External

Internal

Standards

ISO 5599-1

Pilot valve width

30 mm

Valve type

Spool valve

Blocking principle

Single base plate principle

<b>Connection type</b> Plate connection	<b>Max. particle size</b> 50 µm
<b>Flow conductance C</b> 24.5 l/(s*bar)	<b>Oil content of compressed air min.</b> 0 mg/m <sup>3</sup>
<b>Throttle</b> with throttle	<b>Oil content of compressed air max.</b> 5 mg/m <sup>3</sup>
<b>basic valve with electrical connector</b> Basic valve without pilot valve	<b>Standard compressed air connection</b> according to ISO 5599
<b>Frame size</b> ISO 4	<b>Protection class with connection</b> IP65
<b>Control pressure min.</b> 1.5 bar	<b>Duty cycle</b> 100 %
<b>Control pressure max.</b> 16 bar	<b>mounting screws</b> with hexagon socket
<b>Min. ambient temperature</b> -20 °C	<b>Mounting screw tightening torque</b> 10 Nm
<b>Max. ambient temperature</b> 70 °C	<b>Weight</b> 1.28 kg
<b>Min. medium temperature</b> -20 °C	<b>Housing material</b> Aluminum
<b>Max. medium temperature</b> 70 °C	<b>Seal material</b> Acrylonitrile butadiene rubber
<b>Medium</b> Compressed air	<b>Part No.</b> 5814281000

## Technical information

\* Note: ATEX version can be produced by combining the basic valve without coil with a series DO30 CNOMO pilot valve and an ATEX coil. ATEX ID: see ATEX coils catalog page.

The min. control pressure must be adhered to, since otherwise faulty switching and valve failure may result!

The pressure dew point must be at least 15 °C under ambient and medium temperature and may not exceed 3 °C .

The oil content of compressed air must remain constant during the life cycle.

Use only the approved oils from AVENTICS. Further information can be found in the "Technical information" document (available in <https://www.emerson.com/en-us/support>).

## Dimensions

