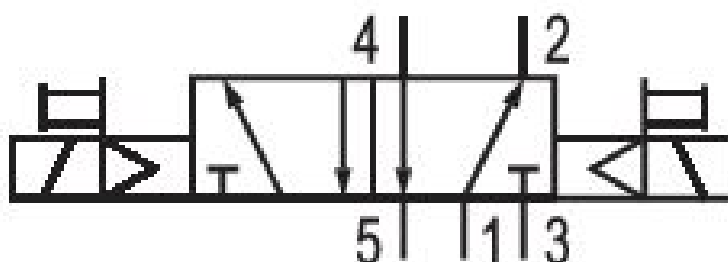
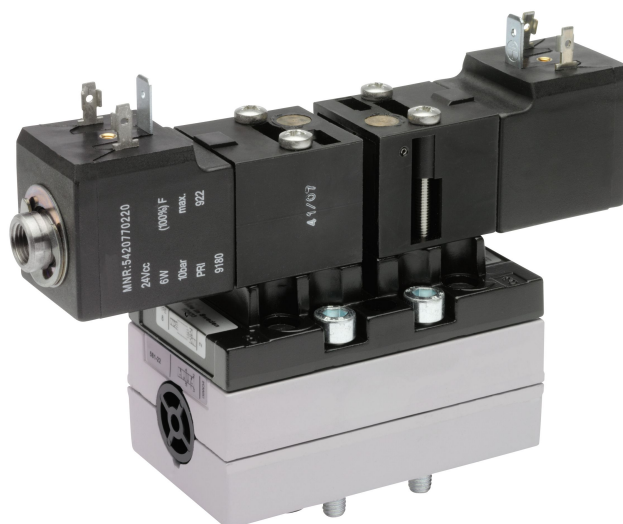


5/2-directional valve, Series 581, size 2

5812290190

ISO 5599-1, size 2, series 581

- $Q_n = 2100 \dots 2700$ l/min



Technical data

Industry
Industrial

Activation
Electrically

Nominal flow Q_n
2700 l/min

Switching principle
5/2

Compressed air connection output
Base plate ISO 5599-1

Working pressure min.
1.5 bar

Working pressure max
10 bar

DC operating voltage
24 V

Voltage tolerance DC
-10% / +10%

Manual override
without detent

Electrical connection type
Plug

Electrical connection size
EN 175301-803, form A

Actuating control
Double Solenoid

Sealing principle
Soft Seal

| | |
|---|---|
| Pilot Internal | Min. medium temperature -15 °C |
| Standards ISO 5599-1 | Max. medium temperature 50 °C |
| Pilot valve width 30x30 mm CNOMO | Medium Compressed air |
| Valve type Spool valve | Max. particle size 50 µm |
| Blocking principle Single base plate principle | Oil content of compressed air min. 0 mg/m ³ |
| Connection type Plate connection | Oil content of compressed air max. 5 mg/m ³ |
| Compressed air connection input Base plate ISO 5599-1 | Protection class with connection IP65 |
| Compressed air connection, exhaust Base plate ISO 5599-1 | Duty cycle 100 % |
| Compressed air connection pilot exhaust G 1/8 | Typ. switch-on time 14 ms |
| Power consumption DC 6 W | Typ. switch-off time 14 ms |
| Flow conductance C 10.8 l/(s*bar) | mounting screws with hexagon socket |
| Frame size ISO 2 | Mounting screw tightening torque 3.5 Nm |
| Control pressure min. 1.5 bar | Weight 0.79 kg |
| Control pressure max. 10 bar | Housing material Aluminum |
| Min. ambient temperature -15 °C | Seal material Acrylonitrile butadiene rubber |
| Max. ambient temperature 50 °C | Part No. 5812290190 |

Technical information

The min. control pressure must be adhered to, since otherwise faulty switching and valve failure may result!

The pressure dew point must be at least 15 °C under ambient and medium temperature and may not exceed 3 °C .

The oil content of compressed air must remain constant during the life cycle.

Use only the approved oils from AVENTICS. Further information can be found in the “Technical information” document (available in <https://www.emerson.com/en-us/support>).

Dimensions

