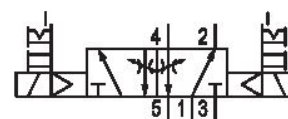


5/2-directional valve, Series 581, size 2

5812291650

ISO 5599-1, size 2, series 581

■ $Q_n = 2100 \dots 2700$ l/min



Technical data

Industry
Industrial

Activation
Electrically

Nominal flow Q_n
2700 l/min

Switching principle
5/2

Compressed air connection output
Base plate ISO 5599-1

Working pressure min.
1.5 bar

Working pressure max
10 bar

DC operating voltage
24 V

Voltage tolerance DC
-10% / +10%

Manual override
with detent
without detent

Electrical connection type
Plug

Electrical connection size
EN 175301-803, form A

Actuating control
Double Solenoid

Sealing principle
Soft Seal

Pilot
Internal

Standards
ISO 5599-1

Pilot valve width
30x22 mm CNOMO

Valve type
Spool valve

Blocking principle	Medium
Single base plate principle	Compressed air
Connection type	Max. particle size
Plate connection	50 µm
Compressed air connection input	Oil content of compressed air min.
Base plate ISO 5599-1	0 mg/m ³
Compressed air connection, exhaust	Oil content of compressed air max.
Base plate ISO 5599-1	5 mg/m ³
Compressed air connection pilot exhaust	Protection class with connection
M5	IP65
Power consumption DC	Compatibility index
2 W	14
Flow conductance C	Duty cycle
10.8 l/(s*bar)	100 %
Throttle	Typ. switch-on time
with throttle	14 ms
Frame size	Typ. switch-off time
ISO 2	14 ms
Control pressure min.	mounting screws
1.5 bar	with hexagon socket
Control pressure max.	Mounting screw tightening torque
10 bar	3.5 Nm
Min. ambient temperature	Weight
-15 °C	0.71 kg
Max. ambient temperature	Housing material
50 °C	Aluminum
Min. medium temperature	Seal material
-15 °C	Acrylonitrile butadiene rubber
Max. medium temperature	Part No.
50 °C	5812291650

Technical information

The min. control pressure must be adhered to, since otherwise faulty switching and valve failure may result!

The pressure dew point must be at least 15 °C under ambient and medium temperature and may not exceed 3 °C .

The oil content of compressed air must remain constant during the life cycle.

Use only the approved oils from AVENTICS. Further information can be found in the “Technical information” document (available in <https://www.emerson.com/en-us/support>).

Dimensions

