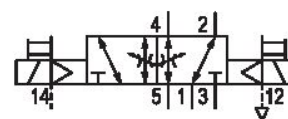


# 5/2-directional valve, Series 581, size 2

## 5812263160

ISO 5599-1, size 2, series 581

■  $Q_n = 2100 \dots 2700$  l/min



### Technical data

Industry  
Industrial

Activation  
Electrically

Nominal flow  $Q_n$   
2700 l/min

Switching principle  
5/2

Compressed air connection output  
Base plate ISO 5599-1

Working pressure min.  
-0.95 bar

Working pressure max  
10 bar

DC operating voltage  
24 V

Voltage tolerance DC  
-10% / +10%

Manual override  
without detent

Electrical connection type  
Plug

Electr. connection  
3-pin

Actuating control  
Double Solenoid

Sealing principle  
Soft Seal

Pilot  
External

Standards  
ISO 5599-1

Pilot valve width  
15 mm

Valve type  
Spool valve

<b>Blocking principle</b> Single base plate principle	<b>Max. particle size</b> 50 µm
<b>Connection type</b> Plate connection	<b>Oil content of compressed air min.</b> 0 mg/m <sup>3</sup>
<b>Compressed air connection input</b> Base plate ISO 5599-1	<b>Oil content of compressed air max.</b> 5 mg/m <sup>3</sup>
<b>Compressed air connection, exhaust</b> Base plate ISO 5599-1	<b>Protection class with connection</b> IP67
<b>Compressed air connection pilot exhaust</b> Base plate ISO 5599-1	<b>Protective circuit</b> Z-diode
<b>Power consumption DC</b> 2.2 W	<b>Reverse polarity protection</b> Protected against polarity reversal
<b>Flow conductance C</b> 10.8 l/(s*bar)	<b>LED status display</b> Green
<b>Throttle</b> with throttle	<b>Duty cycle</b> 100 %
<b>Cable length</b> 0.5 m	<b>Typ. switch-on time</b> 13 ms
<b>Frame size</b> ISO 2	<b>Typ. switch-off time</b> 13 ms
<b>Control pressure min.</b> 1.5 bar	<b>mounting screws</b> with hexagon socket
<b>Control pressure max.</b> 10 bar	<b>Mounting screw tightening torque</b> 3.5 Nm
<b>Min. ambient temperature</b> -10 °C	<b>Weight</b> 0.33 kg
<b>Max. ambient temperature</b> 50 °C	<b>Housing material</b> Polyamide fiber-glass reinforced
<b>Min. medium temperature</b> -10 °C	<b>Seal material</b> Acrylonitrile butadiene rubber
<b>Max. medium temperature</b> 50 °C	<b>Part No.</b> 5812263160
<b>Medium</b> Compressed air	

## Technical information

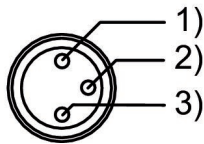
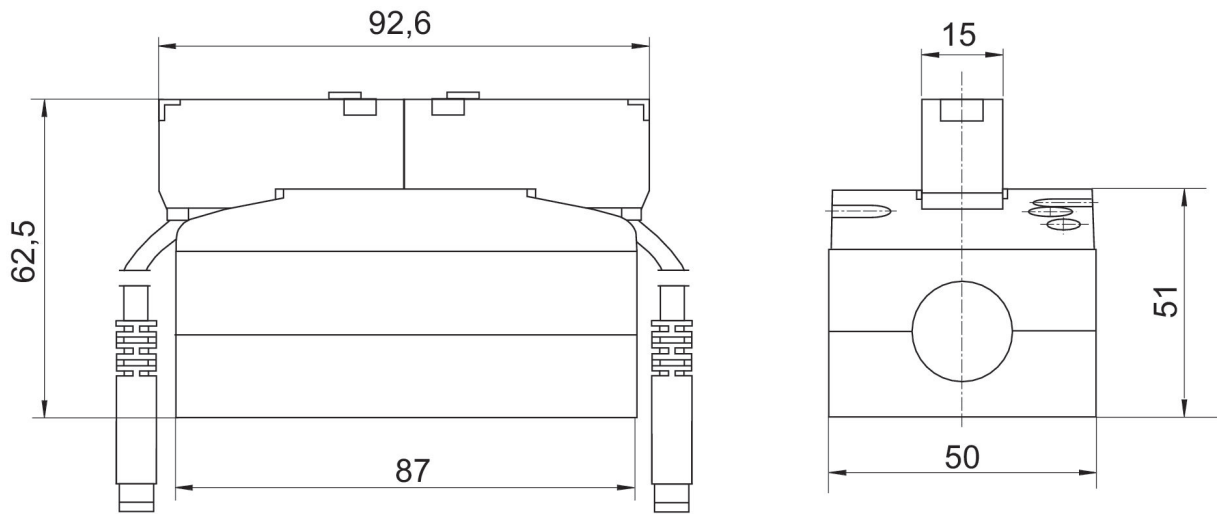
The min. control pressure must be adhered to, since otherwise faulty switching and valve failure may result!

The pressure dew point must be at least 15 °C under ambient and medium temperature and may not exceed 3 °C .

The oil content of compressed air must remain constant during the life cycle.

Use only the approved oils from AVENTICS. Further information can be found in the “Technical information” document (available in <https://www.emerson.com/en-us/support>).

## Dimensions



Pin assignment 1) brown (+24 V) 2) green/yellow (ground) 3) blue (0 V)