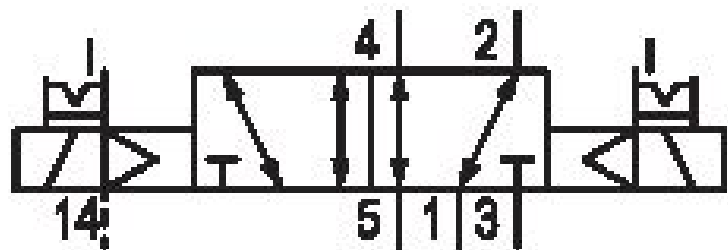


5/2-directional valve, Series 581, size 2

5812222400

ISO 5599-1, size 2, series 581

- $Q_n = 2100 \dots 2700$ l/min



Technical data

Industry
Industrial

Activation
Electrically

Nominal flow Q_n
2700 l/min

Switching principle
5/2

Compressed air connection output
Base plate ISO 5599-1

Working pressure min.
-0.95 bar

Working pressure max
10 bar

Operational voltage AC at 50 Hz
230 V

Voltage tolerance AC 50 Hz
-10% / +10%

Manual override
with detent

Electrical connection type
Plug

Electrical connection size
Form B, industry

Actuating control
Double Solenoid

Sealing principle
Soft Seal

| | |
|--------------------------------------------------------------------|------------------------------------------------------------------|
| Pilot External | Min. medium temperature -15 °C |
| Standards ISO 5599-1 | Max. medium temperature 50 °C |
| Pilot valve width 22 mm | Medium Compressed air |
| Valve type Spool valve | Max. particle size 50 µm |
| Blocking principle Single base plate principle | Oil content of compressed air min. 0 mg/m ³ |
| Connection type Plate connection | Oil content of compressed air max. 5 mg/m ³ |
| Compressed air connection input Base plate ISO 5599-1 | Protection class with connection IP65 |
| Compressed air connection, exhaust Base plate ISO 5599-1 | Duty cycle 100 % |
| Compressed air connection pilot exhaust M5 | Typ. switch-on time 12 ms |
| Holding power AC 50 Hz 8 VA | Typ. switch-off time 12 ms |
| Switch-on power AC 50 Hz 10 VA | mounting screws with hexagon socket |
| Flow conductance C 10.8 l/(s*bar) | Mounting screw tightening torque 3.5 Nm |
| Frame size ISO 2 | Weight 0.42 kg |
| Control pressure min. 1.5 bar | Housing material Polyamide fiber-glass reinforced |
| Control pressure max. 10 bar | Seal material Acrylonitrile butadiene rubber |
| Min. ambient temperature -15 °C | Part No. 5812222400 |
| Max. ambient temperature 50 °C | |

Technical information

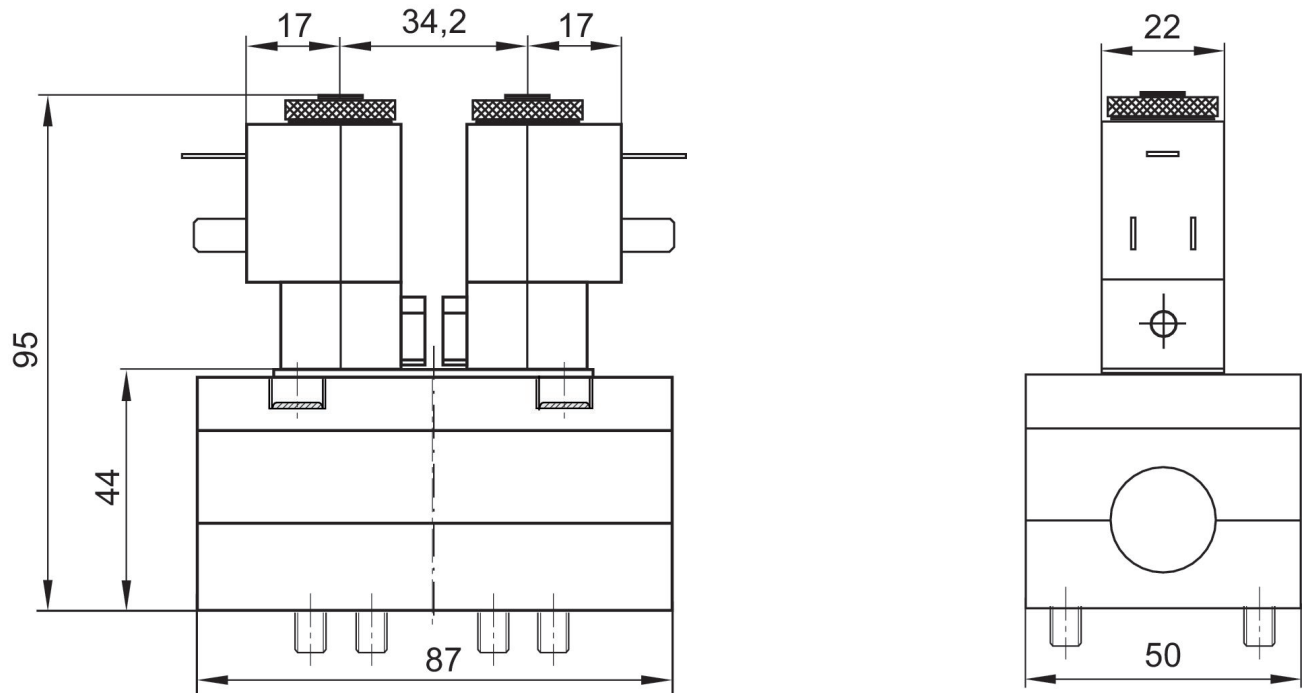
The min. control pressure must be adhered to, since otherwise faulty switching and valve failure may result!

The pressure dew point must be at least 15 °C under ambient and medium temperature and may not exceed 3 °C .

The oil content of compressed air must remain constant during the life cycle.

Use only the approved oils from AVENTICS. Further information can be found in the “Technical information” document (available in <https://www.emerson.com/en-us/support>).

Dimensions



The pilot valves can be loosened and turned through 180°.