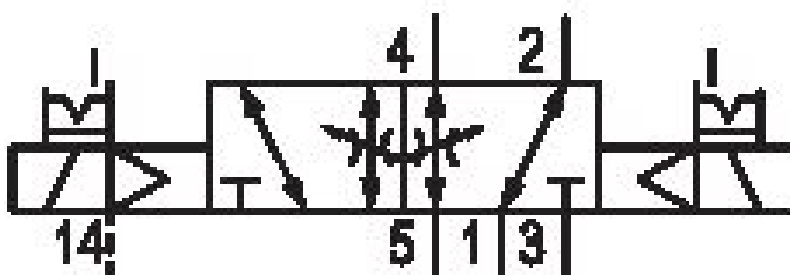


5/2-directional valve, Series 581, size 3

5813223400

ISO 5599-1, size 3, series 581

■ $Q_n = 4100 \dots 4800 \text{ l/min}$



Technical data

Industry
Industrial

Activation
Electrically

Nominal flow Q_n
4800 l/min

Switching principle
5/2

Compressed air connection output
Base plate ISO 5599-1

Working pressure min.
-0.95 bar

Working pressure max
10 bar

Operational voltage AC at 50 Hz
230 V

Voltage tolerance AC 50 Hz
-10% / +10%

Manual override
with detent

Electrical connection type
Plug

Electrical connection size
Form B, industry

Actuating control
Double Solenoid

Sealing principle
Soft Seal

| | |
|---|------------------------------------|
| Pilot | Max. ambient temperature |
| External | 50 °C |
| Standards | Min. medium temperature |
| ISO 5599-1 | -15 °C |
| Pilot valve width | Max. medium temperature |
| 22 mm | 50 °C |
| Valve type | Medium |
| Spool valve | Compressed air |
| Blocking principle | Max. particle size |
| Single base plate principle | 50 µm |
| Connection type | Oil content of compressed air min. |
| Plate connection | 0 mg/m ³ |
| Compressed air connection input | Oil content of compressed air max. |
| Base plate ISO 5599-1 | 5 mg/m ³ |
| Compressed air connection, exhaust | Protection class with connection |
| Base plate ISO 5599-1 | IP65 |
| Compressed air connection pilot exhaust | Duty cycle |
| M5 | 100 % |
| Holding power AC 50 Hz | Typ. switch-on time |
| 8 VA | 14 ms |
| Switch-on power AC 50 Hz | Typ. switch-off time |
| 10 VA | 14 ms |
| Flow conductance C | mounting screws |
| 18.9 l/(s*bar) | with hexagon socket |
| Throttle | Mounting screw tightening torque |
| with throttle | 10 Nm |
| Frame size | Weight |
| ISO 3 | 1.01 kg |
| Control pressure min. | Housing material |
| 1.5 bar | Aluminum |
| Control pressure max. | Seal material |
| 10 bar | Acrylonitrile butadiene rubber |
| Min. ambient temperature | Part No. |
| -15 °C | 5813223400 |

Technical information

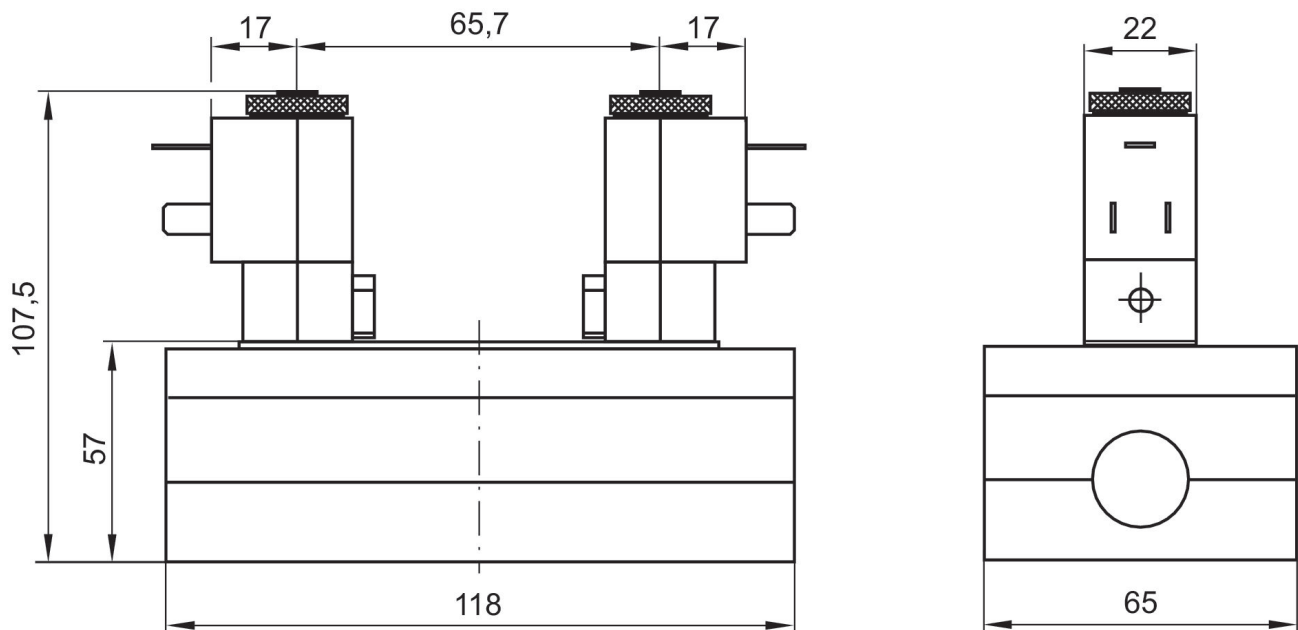
The min. control pressure must be adhered to, since otherwise faulty switching and valve failure may result!

The pressure dew point must be at least 15 °C under ambient and medium temperature and may not exceed 3 °C .

The oil content of compressed air must remain constant during the life cycle.

Use only the approved oils from AVENTICS. Further information can be found in the “Technical information” document (available in <https://www.emerson.com/en-us/support>).

Dimensions



The pilot valves can be loosened and turned through 180°.