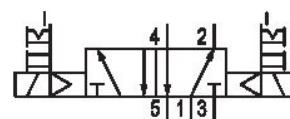


5/2-directional valve, Series 581, size 4

5814290450

ISO 5599-1, size 4, series 581

- $Q_n = 5000 \dots 6000 \text{ l/min}$



Technical data

Industry

Industrial

Activation

Electrically

Nominal flow Q_n

6000 l/min

Switching principle

5/2

Compressed air connection output

Base plate ISO 5599-1

Working pressure min.

1.5 bar

Working pressure max

10 bar

Operational voltage AC at 50 Hz

230 V

Voltage tolerance AC 50 Hz

-10% / +10%

Manual override

with detent

without detent

Electrical connection type

Plug

Electrical connection size

EN 175301-803, form A

Actuating control

Double Solenoid

Sealing principle

Soft Seal

Pilot

Internal

Standards

ISO 5599-1

Pilot valve width

30x22 mm CNOMO

Valve type

Spool valve

Blocking principle	Medium
Single base plate principle	Compressed air
Connection type	Max. particle size
Plate connection	50 µm
Compressed air connection input	Oil content of compressed air min.
Base plate ISO 5599-1	0 mg/m ³
Compressed air connection, exhaust	Oil content of compressed air max.
Base plate ISO 5599-1	5 mg/m ³
Compressed air connection pilot exhaust	Protection class with connection
M5	IP65
Holding power AC 50 Hz	Compatibility index
4.8 VA	14
Switch-on power AC 50 Hz	Duty cycle
7 VA	100 %
Flow conductance C	Typ. switch-on time
24.5 l/(s*bar)	21 ms
Frame size	Typ. switch-off time
ISO 4	21 ms
Control pressure min.	mounting screws
1.5 bar	with hexagon socket
Control pressure max.	Mounting screw tightening torque
10 bar	10 Nm
Min. ambient temperature	Weight
-15 °C	1.57 kg
Max. ambient temperature	Housing material
50 °C	Aluminum
Min. medium temperature	Seal material
-15 °C	Acrylonitrile butadiene rubber
Max. medium temperature	Part No.
50 °C	5814290450

Technical information

The min. control pressure must be adhered to, since otherwise faulty switching and valve failure may result!

The pressure dew point must be at least 15 °C under ambient and medium temperature and may not exceed 3 °C .

The oil content of compressed air must remain constant during the life cycle.

Use only the approved oils from AVENTICS. Further information can be found in the “Technical information” document (available in <https://www.emerson.com/en-us/support>).

Dimensions

