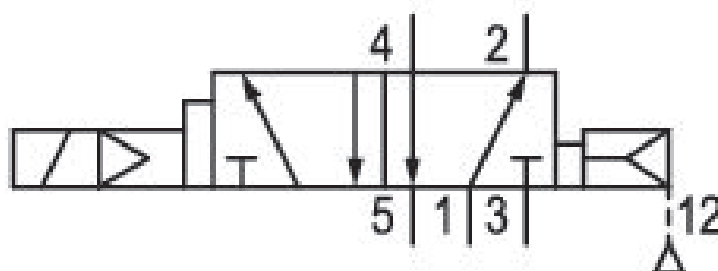


# 5/2-directional valve, Series 581, size 2

## 5812680000

ISO 5599-1, size 2, series 581

■  $Q_n = 2100 \dots 2700$  l/min



### Technical data

**Industry**

Industrial

**Activation**

Electrically

**Nominal flow  $Q_n$**

2700 l/min

**Switching principle**

5/2

**Compressed air connection output**

Base plate ISO 5599-1

**Working pressure min.**

-0.95 bar

**Working pressure max**

16 bar

**Sealing principle**

Soft Seal

**Pilot**

External

Internal

**Standards**

ISO 5599-1

**Pilot valve width**

30 mm

**Valve type**

Spool valve

**Blocking principle**

Single base plate principle

**Connection type**

Plate connection

**Return**

with air spring return

**Compressed air connection input**

Base plate ISO 5599-1

**Compressed air connection, exhaust**

Base plate ISO 5599-1

**Flow conductance C**

10.8 l/(s\*bar)

**basic valve with electrical connector**

Basic valve without pilot valve

**Frame size**

ISO 2

**Control pressure min.**

2.7 bar

**Control pressure max.**

16 bar

**Min. ambient temperature**

-20 °C

**Max. ambient temperature**

70 °C

**Min. medium temperature**

-20 °C

**Max. medium temperature**

70 °C

**Medium**

Compressed air

**Max. particle size**

50 µm

**Oil content of compressed air min.**

0 mg/m<sup>3</sup>

**Oil content of compressed air max.**

5 mg/m<sup>3</sup>

**Protection class with connection**

IP65

**Duty cycle**

100 %

**mounting screws**

with hexagon socket

**Mounting screw tightening torque**

3.5 Nm

**Weight**

0.42 kg

**Housing material**

Aluminum

**Seal material**

Acrylonitrile butadiene rubber

**Part No.**

5812680000

## Technical information

\* Note: ATEX version can be produced by combining the basic valve without coil with a series DO30 CNOMO pilot valve and an ATEX coil. ATEX ID: see ATEX coils catalog page.

Differential piston, signal 14 has priority

The minimum pilot pressure at port 14 is dependent on the pressure in port 1.

valves are fitted with change-over block

The min. control pressure must be adhered to, since otherwise faulty switching and valve failure may result!

The pressure dew point must be at least 15 °C under ambient and medium temperature and may not exceed 3 °C .

The oil content of compressed air must remain constant during the life cycle.

Use only the approved oils from AVENTICS. Further information can be found in the "Technical information" document (available in <https://www.emerson.com/en-us/support>).

## Dimensions

