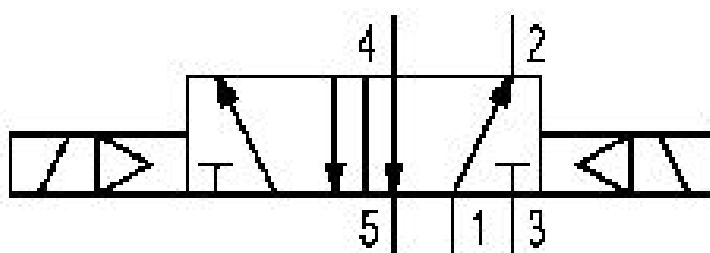


5/2-directional valve, Series 581, size 2

5812280080

ISO 5599-1, size 2, series 581

■ $Q_n = 2100 \dots 2700 \text{ l/min}$



Technical data

Industry

Industrial

Activation

Electrically

Nominal flow Q_n

2700 l/min

Switching principle

5/2

Compressed air connection output

Base plate ISO 5599-1

Working pressure min.

-0.95 bar

Working pressure max

10 bar

Actuating control

Double Solenoid

Sealing principle

Soft Seal

Pilot

External

Internal

Standards

ISO 5599-1

Pilot valve width

30 mm

Valve type

Spool valve

Blocking principle

Single base plate principle

Connection type

Plate connection

Compressed air connection input

Base plate ISO 5599-1

Compressed air connection, exhaust

Base plate ISO 5599-1

Flow conductance C

10.8 l/(s*bar)

basic valve with electrical connector

Basic valve without pilot valve

Frame size

ISO 2

Control pressure min.

1.5 bar

Control pressure max.

10 bar

Min. ambient temperature

-15 °C

Max. ambient temperature

50 °C

Min. medium temperature

-15 °C

Max. medium temperature

50 °C

Medium

Compressed air

Max. particle size

50 µm

Oil content of compressed air min.

0 mg/m³

Oil content of compressed air max.

5 mg/m³

Protection class with connection

IP65

Duty cycle

100 %

mounting screws

with hexagon socket

Mounting screw tightening torque

3.5 Nm

Weight

0.42 kg

Housing material

Polyamide

Seal material

Acrylonitrile butadiene rubber

Part No.

5812280080

Technical information

The min. control pressure must be adhered to, since otherwise faulty switching and valve failure may result!

The pressure dew point must be at least 15 °C under ambient and medium temperature and may not exceed 3 °C .

The oil content of compressed air must remain constant during the life cycle.

Use only the approved oils from AVENTICS. Further information can be found in the "Technical information" document (available in <https://www.emerson.com/en-us/support>).

