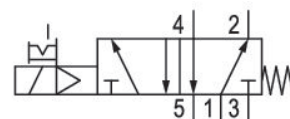
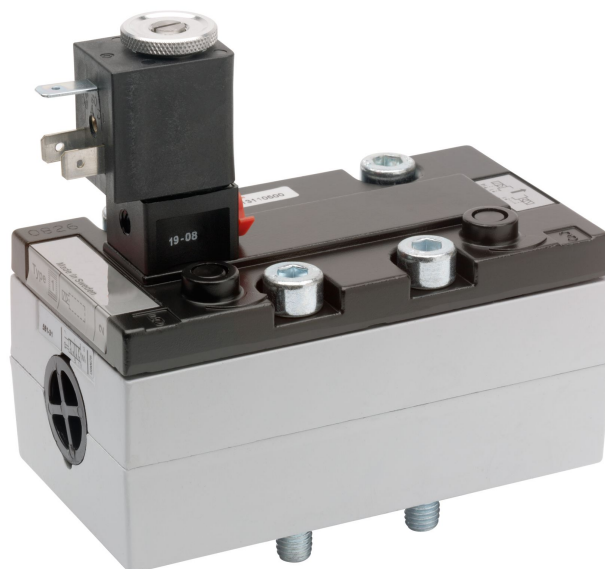


5/2-directional valve, Series 581, size 3

5813110300

ISO 5599-1, size 3, series 581

■ $Q_n = 4100 \dots 4800 \text{ l/min}$



Technical data

Industry
Industrial

Activation
Electrically

Nominal flow Q_n
4800 l/min

Switching principle
5/2

Compressed air connection output
Base plate ISO 5599-1

Working pressure min.
3 bar

Working pressure max
10 bar

Operational voltage AC at 60 Hz
110 V

Voltage tolerance AC 60 Hz
-10% / +10%

Manual override
with detent

Electrical connection type
Plug

Electrical connection size
Form B, industry

Actuating control
Single Solenoid

Sealing principle
Soft Seal

Pilot
Internal

Standards
ISO 5599-1

Pilot valve width
22 mm

Valve type
Spool valve

| | |
|--|--|
| Blocking principle Single base plate principle | Max. medium temperature 50 °C |
| Connection type Plate connection | Medium Compressed air |
| Return With spring return | Max. particle size 50 µm |
| Compressed air connection input Base plate ISO 5599-1 | Oil content of compressed air min. 0 mg/m ³ |
| Compressed air connection, exhaust Base plate ISO 5599-1 | Oil content of compressed air max. 5 mg/m ³ |
| Compressed air connection pilot exhaust M5 | Protection class with connection IP65 |
| Holding power AC 60 Hz 8 VA | Duty cycle 100 % |
| Switch-on power AC 60 Hz 10 VA | Typ. switch-on time 19 ms |
| Flow conductance C 18.9 l/(s*bar) | Typ. switch-off time 71 ms |
| Frame size ISO 3 | mounting screws with hexagon socket |
| Control pressure min. 3 bar | Mounting screw tightening torque 10 Nm |
| Control pressure max. 10 bar | Weight 0.93 kg |
| Min. ambient temperature -15 °C | Housing material Aluminum |
| Max. ambient temperature 50 °C | Seal material Acrylonitrile butadiene rubber |
| Min. medium temperature -15 °C | Part No. 5813110300 |

Technical information

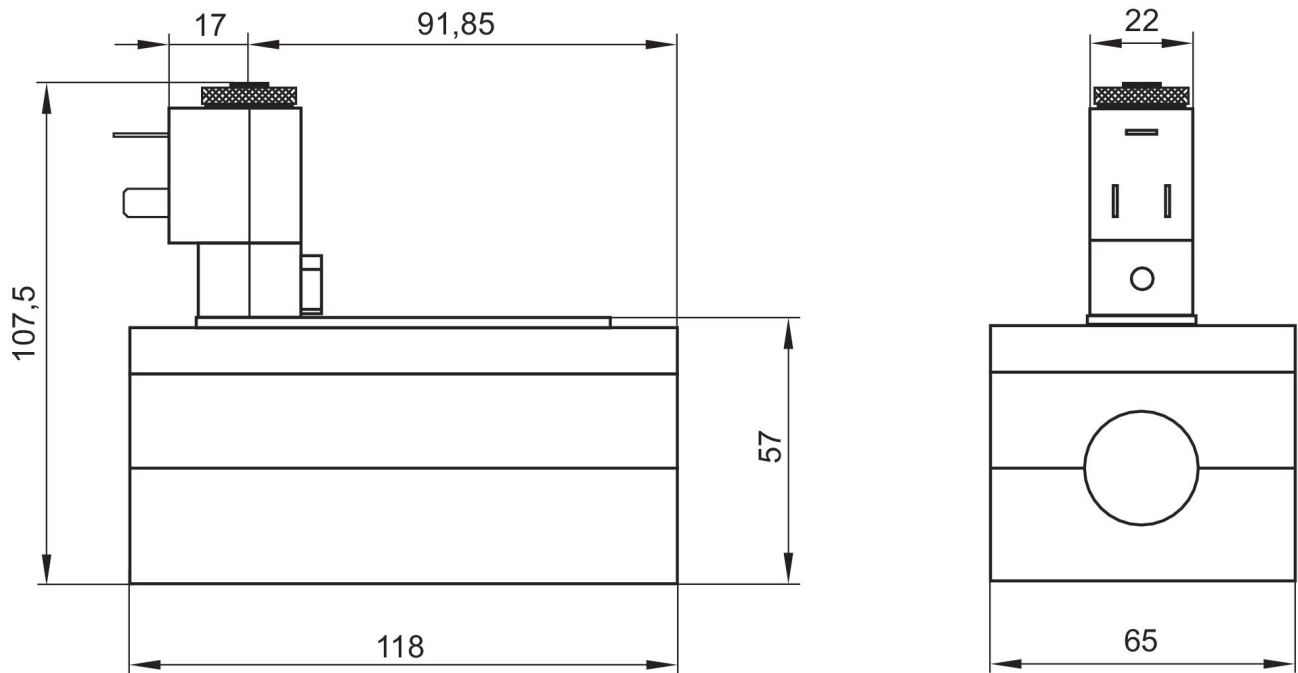
The min. control pressure must be adhered to, since otherwise faulty switching and valve failure may result!

The pressure dew point must be at least 15 °C under ambient and medium temperature and may not exceed 3 °C .

The oil content of compressed air must remain constant during the life cycle.

Use only the approved oils from AVENTICS. Further information can be found in the “Technical information” document (available in <https://www.emerson.com/en-us/support>).

Dimensions



The pilot valves can be loosened and turned through 180°.