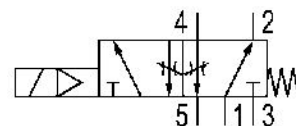
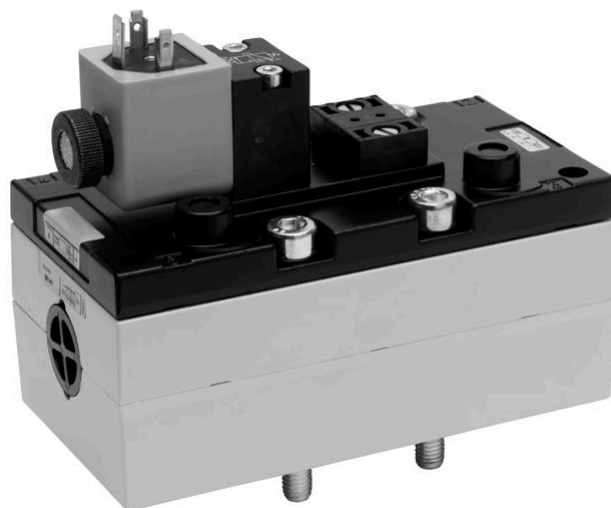


5/2-directional valve, Series 581, size 4

5814171430

ISO 5599-1, size 4, series 581

- $Q_n = 5000 \dots 6000 \text{ l/min}$



Technical data

Industry
Industrial

Activation
Electrically

Nominal flow Q_n
6000 l/min

Switching principle
5/2

Compressed air connection output
Base plate ISO 5599-1

Working pressure min.
3 bar

Working pressure max
16 bar

Operational voltage AC at 50 Hz
230 V

Voltage tolerance AC 50 Hz
-10% / +10%

Manual override
without

Electrical connection type
Plug

Electrical connection size
EN 175301-803, form A

Actuating control
Single Solenoid

Sealing principle
Soft Seal

Pilot
Internal

Standards
ISO 5599-1

Pilot valve width
30x22 mm CNOMO

Valve type
Spool valve

Blocking principle
Single base plate principle

Connection type
Plate connection

Return
With spring return

Compressed air connection input
Base plate ISO 5599-1

Compressed air connection, exhaust Base plate ISO 5599-1	Max. particle size 50 µm
Compressed air connection pilot exhaust M5	Oil content of compressed air min. 0 mg/m ³
Holding power AC 50 Hz 10.8 VA	Oil content of compressed air max. 5 mg/m ³
Switch-on power AC 50 Hz 15.2 VA	Protection class with connection IP65
Flow conductance C 24.5 l/(s*bar)	Duty cycle 100 %
Throttle with throttle	Typ. switch-on time 33 ms
Frame size ISO 4	Typ. switch-off time 77 ms
Control pressure min. 3 bar	mounting screws with hexagon socket
Control pressure max. 16 bar	Mounting screw tightening torque 10 Nm
Min. ambient temperature -15 °C	Weight 1.4 kg
Max. ambient temperature 50 °C	Housing material Aluminum
Min. medium temperature -15 °C	Seal material Acrylonitrile butadiene rubber
Max. medium temperature 50 °C	Part No. 5814171430
Medium Compressed air	

Technical information

The min. control pressure must be adhered to, since otherwise faulty switching and valve failure may result!

The pressure dew point must be at least 15 °C under ambient and medium temperature and may not exceed 3 °C .

The oil content of compressed air must remain constant during the life cycle.

Use only the approved oils from AVENTICS. Further information can be found in the “Technical information” document (available in <https://www.emerson.com/en-us/support>).

Dimensions

