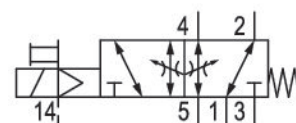


# 5/2-directional valve, Series 581, size 4

## 5814173440

ISO 5599-1, size 4, series 581

■  $Q_n = 5000 \dots 6000 \text{ l/min}$



### Technical data

Industry  
Industrial

Activation  
Electrically

Nominal flow  $Q_n$   
6000 l/min

Switching principle  
5/2

Compressed air connection output  
Base plate ISO 5599-1

Working pressure min.  
-0.95 bar

Working pressure max  
16 bar

Operational voltage AC at 50 Hz  
230 V

Voltage tolerance AC 50 Hz  
-10% / +10%

Manual override  
without detent

Electrical connection type  
Plug

Electrical connection size  
EN 175301-803, form A

Actuating control  
Single Solenoid

Sealing principle  
Soft Seal

Pilot  
External

Standards  
ISO 5599-1

Pilot valve width  
30x22 mm CNOMO

Valve type  
Spool valve

**Blocking principle**

Single base plate principle

**Connection type**

Plate connection

**Return**

With spring return

**Compressed air connection input**

Base plate ISO 5599-1

**Compressed air connection, exhaust**

Base plate ISO 5599-1

**Compressed air connection pilot exhaust**

M5

**Holding power AC 50 Hz**

10.8 VA

**Switch-on power AC 50 Hz**

15.2 VA

**Flow conductance C**

24.5 l/(s\*bar)

**Throttle**

with throttle

**Frame size**

ISO 4

**Control pressure min.**

3 bar

**Control pressure max.**

16 bar

**Min. ambient temperature**

-15 °C

**Max. ambient temperature**

50 °C

**Min. medium temperature**

-15 °C

**Max. medium temperature**

50 °C

**Medium**

Compressed air

**Max. particle size**

50 µm

**Oil content of compressed air min.**

0 mg/m<sup>3</sup>

**Oil content of compressed air max.**

5 mg/m<sup>3</sup>

**Protection class with connection**

IP65

**Duty cycle**

100 %

**Typ. switch-on time**

33 ms

**Typ. switch-off time**

77 ms

**mounting screws**

with hexagon socket

**Mounting screw tightening torque**

10 Nm

**Weight**

1.4 kg

**Housing material**

Aluminum

**Seal material**

Acrylonitrile butadiene rubber

**Part No.**

5814173440

## Technical information

The min. control pressure must be adhered to, since otherwise faulty switching and valve failure may result!

The pressure dew point must be at least 15 °C under ambient and medium temperature and may not exceed 3 °C .

The oil content of compressed air must remain constant during the life cycle.

Use only the approved oils from AVENTICS. Further information can be found in the “Technical information” document (available in <https://www.emerson.com/en-us/support>).

## Dimensions

