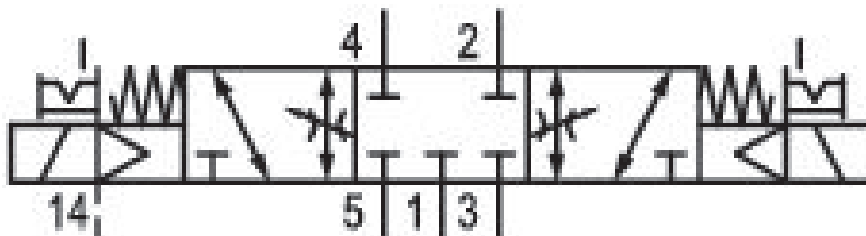


# 5/3-directional valve, Series 581, size 3

## 5813423200

ISO 5599-1, size 3, series 581

■  $Q_n = 4100 \dots 4800 \text{ l/min}$



### Technical data

Industry  
Industrial

Activation  
Electrically

Nominal flow  $Q_n$   
4100 l/min

Switching principle  
5/3

Version  
Closed Center

Compressed air connection output  
Base plate ISO 5599-1

Working pressure min.  
-0.95 bar

Working pressure max  
10 bar

Operational voltage AC at 50 Hz  
24 V

Voltage tolerance AC 50 Hz  
-10% / +10%

Manual override  
with detent

Electrical connection type  
Plug

Electrical connection size  
Form B, industry

Sealing principle  
Soft Seal

Pilot  
External

Standards  
ISO 5599-1

Pilot valve width  
22 mm

Valve type  
Spool valve

Blocking principle  
Single base plate principle

Connection type  
Plate connection

Compressed air connection input  
Base plate ISO 5599-1

Compressed air connection, exhaust  
Base plate ISO 5599-1

Compressed air connection pilot exhaust  
M5

Holding power AC 50 Hz  
8 VA

Switch-on power AC 50 Hz  
10 VA

Flow conductance C  
14.1 l/(s\*bar)

Throttle  
with throttle

Frame size  
ISO 3

Control pressure min.  
3 bar

Control pressure max.  
10 bar

Min. ambient temperature  
-15 °C

Max. ambient temperature  
50 °C

Min. medium temperature -15 °C	Typ. switch-on time 23 ms
Max. medium temperature 50 °C	Typ. switch-off time 64 ms
Medium Compressed air	mounting screws with hexagon socket
Max. particle size 50 µm	Mounting screw tightening torque 10 Nm
Oil content of compressed air min. 0 mg/m <sup>3</sup>	Weight 1.01 kg
Oil content of compressed air max. 5 mg/m <sup>3</sup>	Housing material Aluminum
Protection class with connection IP65	Seal material Acrylonitrile butadiene rubber
Duty cycle 100 %	Part No. 5813423200

## Technical information

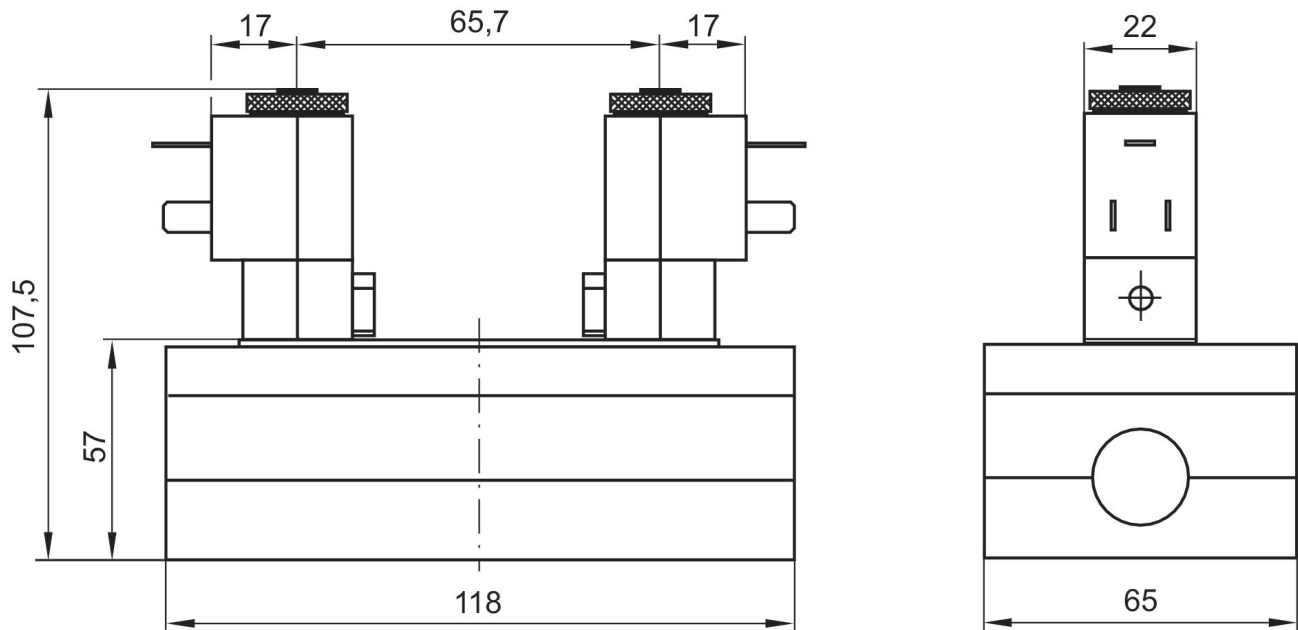
The min. control pressure must be adhered to, since otherwise faulty switching and valve failure may result!

The pressure dew point must be at least 15 °C under ambient and medium temperature and may not exceed 3 °C .

The oil content of compressed air must remain constant during the life cycle.

Use only the approved oils from AVENTICS. Further information can be found in the “Technical information” document (available in <https://www.emerson.com/en-us/support>).

## Dimensions



The pilot valves can be loosened and turned through 180°.