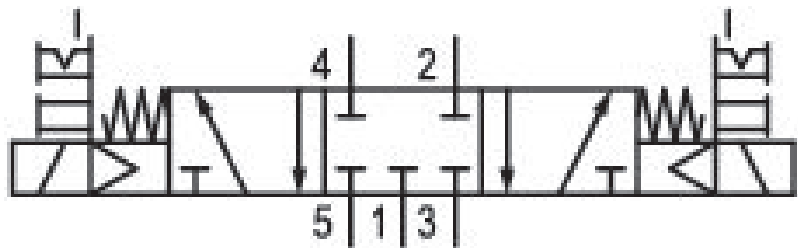


5/3-directional valve, Series 581, size 2

5812490650

ISO 5599-1, size 2, series 581

- $Q_n = 2100 \dots 2700 \text{ l/min}$



Technical data

Industry

Industrial

Activation

Electrically

Nominal flow Q_n

2100 l/min

Switching principle

5/3

Version

Closed Center

Compressed air connection output

Base plate ISO 5599-1

Working pressure min.

3 bar

Working pressure max

10 bar

DC operating voltage

24 V

Voltage tolerance DC

-10% / +10%

Manual override

with detent

without detent

Electrical connection type

Plug

Electrical connection size

EN 175301-803, form A

Sealing principle

Soft Seal

| | |
|---|------------------------------------|
| Pilot | Max. medium temperature |
| Internal | 50 °C |
| Standards | Medium |
| ISO 5599-1 | Compressed air |
| Pilot valve width | Max. particle size |
| 30x22 mm CNOMO | 50 µm |
| Valve type | Oil content of compressed air min. |
| Spool valve | 0 mg/m ³ |
| Blocking principle | Oil content of compressed air max. |
| Single base plate principle | 5 mg/m ³ |
| Connection type | Protection class with connection |
| Plate connection | IP65 |
| Compressed air connection input | Compatibility index |
| Base plate ISO 5599-1 | 14 |
| Compressed air connection, exhaust | Duty cycle |
| Base plate ISO 5599-1 | 100 % |
| Compressed air connection pilot exhaust | Typ. switch-on time |
| M5 | 17 ms |
| Power consumption DC | Typ. switch-off time |
| 2 W | 36 ms |
| Flow conductance C | mounting screws |
| 8.9 l/(s*bar) | with hexagon socket |
| Frame size | Mounting screw tightening torque |
| ISO 2 | 3.5 Nm |
| Control pressure min. | Weight |
| 3 bar | 0.71 kg |
| Control pressure max. | Housing material |
| 10 bar | Aluminum |
| Min. ambient temperature | Seal material |
| -15 °C | Acrylonitrile butadiene rubber |
| Max. ambient temperature | Part No. |
| 50 °C | 5812490650 |
| Min. medium temperature | |
| -15 °C | |

Technical information

The min. control pressure must be adhered to, since otherwise faulty switching and valve failure may result!

The pressure dew point must be at least 15 °C under ambient and medium temperature and may not exceed 3 °C .

The oil content of compressed air must remain constant during the life cycle.

Use only the approved oils from AVENTICS. Further information can be found in the “Technical information” document (available in <https://www.emerson.com/en-us/support>).

Dimensions

