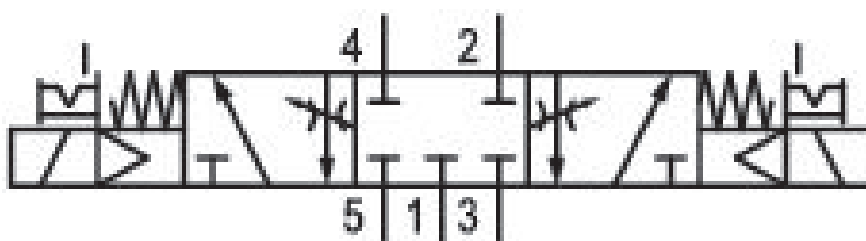


# 5/3-directional valve, Series 581, size 4

## 5814421600

ISO 5599-1, size 4, series 581

- $Q_n = 5000 \dots 6000 \text{ l/min}$



### Technical data

Industry  
Industrial

Activation  
Electrically

Nominal flow  $Q_n$   
5000 l/min

Switching principle  
5/3

Version  
Closed Center

Compressed air connection output  
Base plate ISO 5599-1

Working pressure min.  
3 bar

Working pressure max  
10 bar

DC operating voltage  
48 V

Voltage tolerance DC  
-10% / +10%

Manual override  
with detent

Electrical connection type  
Plug

Electrical connection size  
Form B, industry

Sealing principle  
Soft Seal

Pilot	Min. medium temperature
Internal	-15 °C
Standards	Max. medium temperature
ISO 5599-1	50 °C
Pilot valve width	Medium
22 mm	Compressed air
Valve type	Max. particle size
Spool valve	50 µm
Blocking principle	Oil content of compressed air min.
Single base plate principle	0 mg/m <sup>3</sup>
Connection type	Oil content of compressed air max.
Plate connection	5 mg/m <sup>3</sup>
Compressed air connection input	Protection class with connection
Base plate ISO 5599-1	IP65
Compressed air connection, exhaust	Duty cycle
Base plate ISO 5599-1	100 %
Compressed air connection pilot exhaust	Typ. switch-on time
M5	30 ms
Power consumption DC	Typ. switch-off time
5 W	74 ms
Flow conductance C	mounting screws
15.5 l/(s*bar)	with hexagon socket
Throttle	Mounting screw tightening torque
with throttle	10 Nm
Frame size	Weight
ISO 4	1.44 kg
Control pressure min.	Housing material
3 bar	Aluminum
Control pressure max.	Seal material
10 bar	Acrylonitrile butadiene rubber
Min. ambient temperature	Part No.
-15 °C	5814421600
Max. ambient temperature	
50 °C	

## Technical information

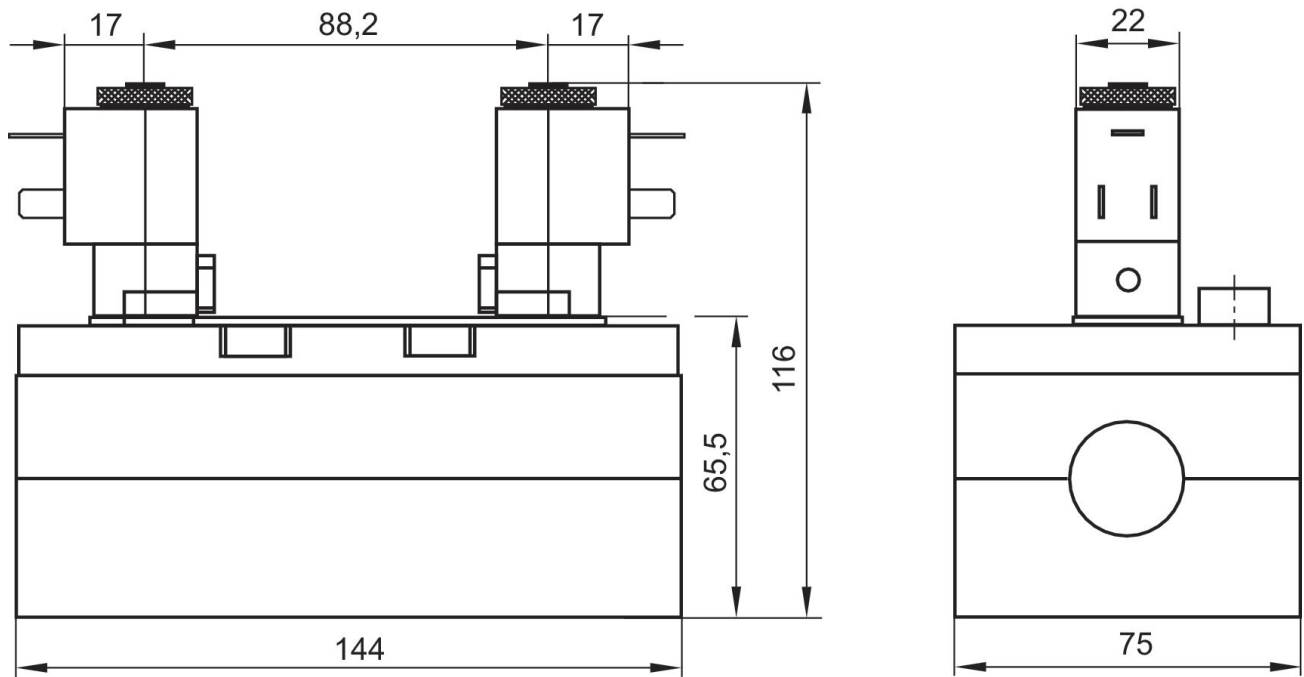
The min. control pressure must be adhered to, since otherwise faulty switching and valve failure may result!

The pressure dew point must be at least 15 °C under ambient and medium temperature and may not exceed 3 °C .

The oil content of compressed air must remain constant during the life cycle.

Use only the approved oils from AVENTICS. Further information can be found in the “Technical information” document (available in <https://www.emerson.com/en-us/support>).

## Dimensions



The pilot valves can be loosened and turned through 180°.