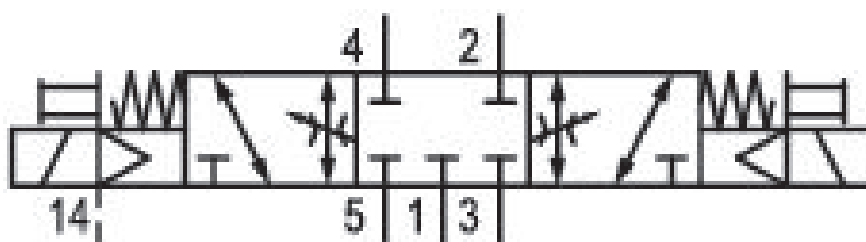


5/3-directional valve, Series 581, size 2

5812493440

ISO 5599-1, size 2, series 581

■ $Q_n = 2100 \dots 2700$ l/min



Technical data

Industry
Industrial

Activation
Electrically

Nominal flow Q_n
2100 l/min

Switching principle
5/3

Version
Closed Center

Compressed air connection output
Base plate ISO 5599-1

Working pressure min.
-0.95 bar

Working pressure max
16 bar

Operational voltage AC at 50 Hz
230 V

Voltage tolerance AC 50 Hz
-10% / +10%

Manual override
without detent

Electrical connection type
Plug

Electrical connection size
EN 175301-803, form A

Sealing principle
Soft Seal

Pilot
External

Standards
ISO 5599-1

Pilot valve width
30x22 mm CNOMO

Valve type
Spool valve

Blocking principle
Single base plate principle

Connection type
Plate connection

Compressed air connection input Base plate ISO 5599-1	Medium Compressed air
Compressed air connection, exhaust Base plate ISO 5599-1	Max. particle size 50 µm
Compressed air connection pilot exhaust M5	Oil content of compressed air min. 0 mg/m ³
Holding power AC 50 Hz 10.8 VA	Oil content of compressed air max. 5 mg/m ³
Switch-on power AC 50 Hz 15.2 VA	Protection class with connection IP65
Flow conductance C 8.9 l/(s*bar)	Duty cycle 100 %
Throttle with throttle	Typ. switch-on time 17 ms
Frame size ISO 2	Typ. switch-off time 36 ms
Control pressure min. 3 bar	mounting screws with hexagon socket
Control pressure max. 16 bar	Mounting screw tightening torque 3.5 Nm
Min. ambient temperature -15 °C	Weight 0.71 kg
Max. ambient temperature 50 °C	Housing material Aluminum
Min. medium temperature -15 °C	Seal material Acrylonitrile butadiene rubber
Max. medium temperature 50 °C	Part No. 5812493440

Technical information

The min. control pressure must be adhered to, since otherwise faulty switching and valve failure may result!

The pressure dew point must be at least 15 °C under ambient and medium temperature and may not exceed 3 °C .

The oil content of compressed air must remain constant during the life cycle.

Use only the approved oils from AVENTICS. Further information can be found in the “Technical information” document (available in <https://www.emerson.com/en-us/support>).

Dimensions

