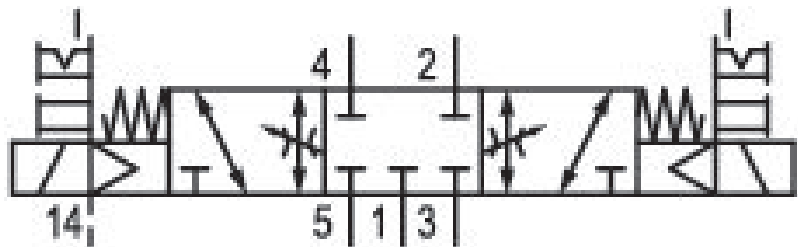


# 5/3-directional valve, Series 581, size 3

## 5813493450

ISO 5599-1, size 3, series 581

■  $Q_n = 4100 \dots 4800$  l/min



### Technical data

Industry  
Industrial

Activation  
Electrically

Nominal flow  $Q_n$   
4100 l/min

Switching principle  
5/3

Version  
Closed Center

Compressed air connection output  
Base plate ISO 5599-1

Working pressure min.  
-0.95 bar

Working pressure max  
10 bar

Operational voltage AC at 50 Hz  
230 V

Voltage tolerance AC 50 Hz  
-10% / +10%

Manual override  
with detent  
without detent

Electrical connection type  
Plug

Electrical connection size  
EN 175301-803, form A

Sealing principle  
Soft Seal

Pilot  
External

Standards  
ISO 5599-1

Pilot valve width  
30x22 mm CNOMO

Valve type  
Spool valve

Blocking principle  
Single base plate principle

|   |   |
|---|---|
| Connection type<br>Plate connection                         | Medium<br>Compressed air                                  |
| Compressed air connection input<br>Base plate ISO 5599-1    | Max. particle size<br>50 µm                               |
| Compressed air connection, exhaust<br>Base plate ISO 5599-1 | Oil content of compressed air min.<br>0 mg/m <sup>3</sup> |
| Compressed air connection pilot exhaust<br>M5               | Oil content of compressed air max.<br>5 mg/m <sup>3</sup> |
| Holding power AC 50 Hz<br>4.8 VA                            | Protection class with connection<br>IP65                  |
| Switch-on power AC 50 Hz<br>7 VA                            | Compatibility index<br>14                                 |
| Flow conductance C<br>14.1 l/(s*bar)                        | Duty cycle<br>100 %                                       |
| Throttle<br>with throttle                                   | Typ. switch-on time<br>22 ms                              |
| Frame size<br>ISO 3   | Typ. switch-off time<br>61 ms                             |
| Control pressure min.<br>3 bar                              | mounting screws<br>with hexagon socket                    |
| Control pressure max.<br>10 bar                             | Mounting screw tightening torque<br>10 Nm                 |
| Min. ambient temperature<br>-15 °C                          | Weight<br>1.14 kg   |
| Max. ambient temperature<br>50 °C                           | Housing material<br>Aluminum                              |
| Min. medium temperature<br>-15 °C                           | Seal material<br>Acrylonitrile butadiene rubber           |
| Max. medium temperature<br>50 °C                            | Part No.<br>5813493450                                    |

## Technical information

The min. control pressure must be adhered to, since otherwise faulty switching and valve failure may result!

The pressure dew point must be at least 15 °C under ambient and medium temperature and may not exceed 3 °C .

The oil content of compressed air must remain constant during the life cycle.

Use only the approved oils from AVENTICS. Further information can be found in the “Technical information” document (available in <https://www.emerson.com/en-us/support>).

## Dimensions

