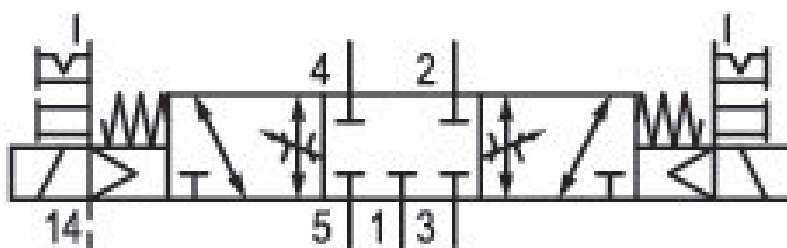


# 5/3-directional valve, Series 581, size 4

## 5814493450

ISO 5599-1, size 4, series 581

- $Q_n = 5000 \dots 6000 \text{ l/min}$



### Technical data

Industry

Industrial

Activation

Electrically

Nominal flow  $Q_n$

5000 l/min

Switching principle

5/3

Version

Closed Center

Compressed air connection output

Base plate ISO 5599-1

Working pressure min.

-0.95 bar

Working pressure max

10 bar

Operational voltage AC at 50 Hz

230 V

Voltage tolerance AC 50 Hz

-10% / +10%

Manual override

with detent

without detent

Electrical connection type

Plug

Electrical connection size

EN 175301-803, form A

Sealing principle

Soft Seal

<b>Pilot</b> External	<b>Min. medium temperature</b> -15 °C
<b>Standards</b> ISO 5599-1	<b>Max. medium temperature</b> 50 °C
<b>Pilot valve width</b> 30x22 mm CNOMO	<b>Medium</b> Compressed air
<b>Valve type</b> Spool valve	<b>Max. particle size</b> 50 µm
<b>Blocking principle</b> Single base plate principle	<b>Oil content of compressed air min.</b> 0 mg/m <sup>3</sup>
<b>Connection type</b> Plate connection	<b>Oil content of compressed air max.</b> 5 mg/m <sup>3</sup>
<b>Compressed air connection input</b> Base plate ISO 5599-1	<b>Protection class with connection</b> IP65
<b>Compressed air connection, exhaust</b> Base plate ISO 5599-1	<b>Compatibility index</b> 14
<b>Compressed air connection pilot exhaust</b> M5	<b>Duty cycle</b> 100 %
<b>Holding power AC 50 Hz</b> 4.8 VA	<b>Typ. switch-on time</b> 26 ms
<b>Switch-on power AC 50 Hz</b> 7 VA	<b>Typ. switch-off time</b> 68 ms
<b>Flow conductance C</b> 15.5 l/(s*bar)	<b>mounting screws</b> with hexagon socket
<b>Throttle</b> with throttle	<b>Mounting screw tightening torque</b> 10 Nm
<b>Frame size</b> ISO 4	<b>Weight</b> 1.57 kg
<b>Control pressure min.</b> 3 bar	<b>Housing material</b> Aluminum
<b>Control pressure max.</b> 10 bar	<b>Seal material</b> Acrylonitrile butadiene rubber
<b>Min. ambient temperature</b> -15 °C	<b>Part No.</b> 5814493450
<b>Max. ambient temperature</b> 50 °C	

## Technical information

The min. control pressure must be adhered to, since otherwise faulty switching and valve failure may result!

The pressure dew point must be at least 15 °C under ambient and medium temperature and may not exceed 3 °C .

The oil content of compressed air must remain constant during the life cycle.

Use only the approved oils from AVENTICS. Further information can be found in the "Technical information" document (available in <https://www.emerson.com/en-us/support>).

## Dimensions

