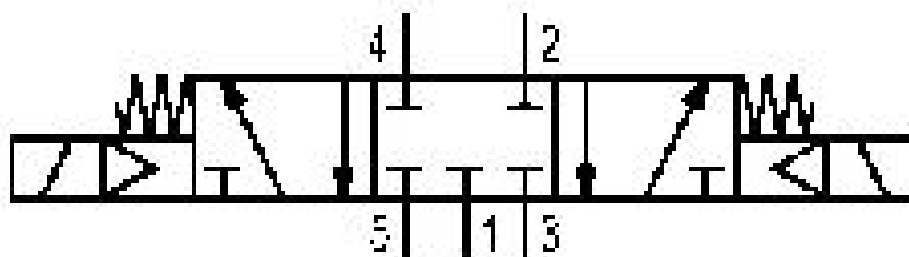


5/3-directional valve, Series 581, size 3

5813480100

ISO 5599-1, size 3, series 581

■ $Q_n = 4100 \dots 4800 \text{ l/min}$



Technical data

Industry
Industrial

Activation
Electrically

Nominal flow Q_n
4100 l/min

Switching principle
5/3

Version
Closed Center

Compressed air connection output
Base plate ISO 5599-1

Working pressure min.
-0.95 bar

Working pressure max
16 bar

Sealing principle
Soft Seal

Pilot
External
Internal

ATEX
ATEX

II 2G Ex h IIC T6 Gb

II 2D Ex h IIIC T85°C Db IP65

Standards
ISO 5599-1

Pilot valve width
30 mm

Valve type Spool valve	Max. medium temperature 70 °C
Blocking principle Single base plate principle	Medium Compressed air
Connection type Plate connection	Max. particle size 50 µm
Compressed air connection input Base plate ISO 5599-1	Oil content of compressed air min. 0 mg/m ³
Compressed air connection, exhaust Base plate ISO 5599-1	Oil content of compressed air max. 5 mg/m ³
Flow conductance C 14.1 l/(s*bar)	Protection class with connection IP65
basic valve with electrical connector Basic valve without pilot valve	Duty cycle 100 %
Frame size ISO 3	mounting screws with hexagon socket
Control pressure min. 3 bar	Mounting screw tightening torque 10 Nm
Control pressure max. 16 bar	Weight 0.85 kg
Min. ambient temperature -20 °C	Housing material Aluminum
Max. ambient temperature 70 °C	Seal material Acrylonitrile butadiene rubber
Min. medium temperature -20 °C	Part No. 5813480100

Technical information

* Note: ATEX version can be produced by combining the basic valve without coil with a series DO30 CNOMO pilot valve and an ATEX coil. ATEX ID: see ATEX coils catalog page.

The min. control pressure must be adhered to, since otherwise faulty switching and valve failure may result!

The pressure dew point must be at least 15 °C under ambient and medium temperature and may not exceed 3 °C .

The oil content of compressed air must remain constant during the life cycle.

Use only the approved oils from AVENTICS. Further information can be found in the “Technical information” document (available in <https://www.emerson.com/en-us/support>).

Dimensions

