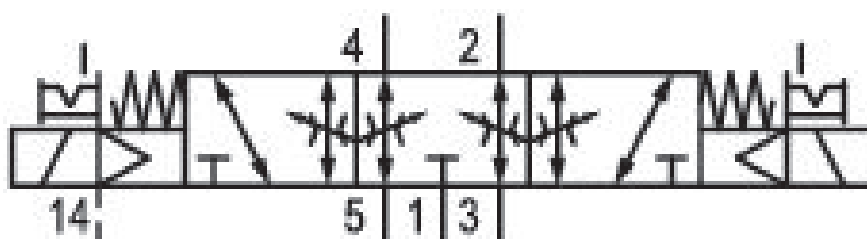


5/3-directional valve, Series 581, size 2

5812523200

ISO 5599-1, size 2, series 581

■ $Q_n = 2100 \dots 2700$ l/min



Technical data

Industry

Industrial

Activation

Electrically

Nominal flow Q_n

2100 l/min

Switching principle

5/3

Version

Exhausted Center

Compressed air connection output

Base plate ISO 5599-1

Working pressure min.

-0.95 bar

Working pressure max

10 bar

Operational voltage AC at 50 Hz

24 V

Voltage tolerance AC 50 Hz

-10% / +10%

Manual override

with detent

Electrical connection type

Plug

Electrical connection size

Form B, industry

Sealing principle

Soft Seal

Pilot	Max. ambient temperature
External	50 °C
Standards	Min. medium temperature
ISO 5599-1	-15 °C
Pilot valve width	Max. medium temperature
22 mm	50 °C
Valve type	Medium
Spool valve	Compressed air
Blocking principle	Max. particle size
Single base plate principle	50 µm
Connection type	Oil content of compressed air min.
Plate connection	0 mg/m ³
Compressed air connection input	Oil content of compressed air max.
Base plate ISO 5599-1	5 mg/m ³
Compressed air connection, exhaust	Protection class with connection
Base plate ISO 5599-1	IP65
Compressed air connection pilot exhaust	Duty cycle
M5	100 %
Holding power AC 50 Hz	Typ. switch-on time
8 VA	30 ms
Switch-on power AC 50 Hz	Typ. switch-off time
10 VA	74 ms
Flow conductance C	mounting screws
8.9 l/(s*bar)	with hexagon socket
Throttle	Mounting screw tightening torque
with throttle	3.5 Nm
Frame size	Weight
ISO 2	0.42 kg
Control pressure min.	Housing material
3 bar	Polyamide fiber-glass reinforced
Control pressure max.	Seal material
10 bar	Acrylonitrile butadiene rubber
Min. ambient temperature	Part No.
-15 °C	5812523200

Technical information

The min. control pressure must be adhered to, since otherwise faulty switching and valve failure may result!

The pressure dew point must be at least 15 °C under ambient and medium temperature and may not exceed 3 °C .

The oil content of compressed air must remain constant during the life cycle.

Use only the approved oils from AVENTICS. Further information can be found in the "Technical information" document (available in <https://www.emerson.com/en-us/support>).

Dimensions



The pilot valves can be loosened and turned through 180°.