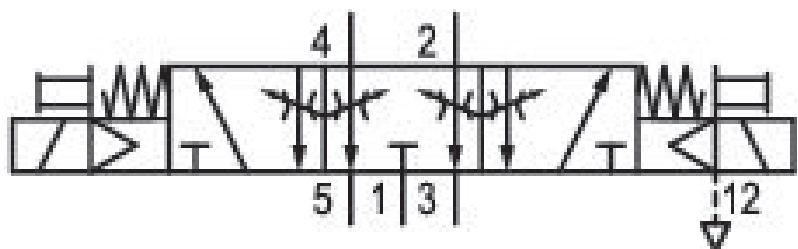


5/3-directional valve, Series 581, size 2

5812561160

ISO 5599-1, size 2, series 581

■ $Q_n = 2100 \dots 2700 \text{ l/min}$



Technical data

Industry
Industrial

Activation
Electrically

Nominal flow Q_n
2100 l/min

Switching principle
5/3

Version
Exhausted Center

Compressed air connection output
Base plate ISO 5599-1

Working pressure min.
3 bar

Working pressure max
10 bar

DC operating voltage
24 V

Voltage tolerance DC
-10% / +10%

Manual override
without detent

Electrical connection type
Plug

Electr. connection
3-pin

Sealing principle
Soft Seal

Pilot	Max. medium temperature
Internal	50 °C
Standards	Medium
ISO 5599-1	Compressed air
Pilot valve width	Max. particle size
15 mm	50 µm
Valve type	Oil content of compressed air min.
Spool valve	0 mg/m ³
Blocking principle	Oil content of compressed air max.
Single base plate principle	5 mg/m ³
Connection type	Protection class with connection
Plate connection	IP67
Compressed air connection input	Protective circuit
Base plate ISO 5599-1	Z-diode
Compressed air connection, exhaust	Reverse polarity protection
Base plate ISO 5599-1	Protected against polarity reversal
Compressed air connection pilot exhaust	LED status display
Base plate ISO 5599-1	Green
Power consumption DC	Duty cycle
2.2 W	100 %
Flow conductance C	Typ. switch-on time
8.9 l/(s*bar)	14 ms
Throttle	Typ. switch-off time
with throttle	28 ms
Cable length	mounting screws
0.5 m	with hexagon socket
Frame size	Mounting screw tightening torque
ISO 2	3.5 Nm
Control pressure min.	Weight
3 bar	0.33 kg
Control pressure max.	Housing material
10 bar	Polyamide fiber-glass reinforced
Min. ambient temperature	Seal material
-10 °C	Acrylonitrile butadiene rubber
Max. ambient temperature	Part No.
50 °C	5812561160
Min. medium temperature	
-10 °C	

Technical information

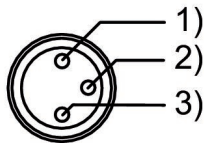
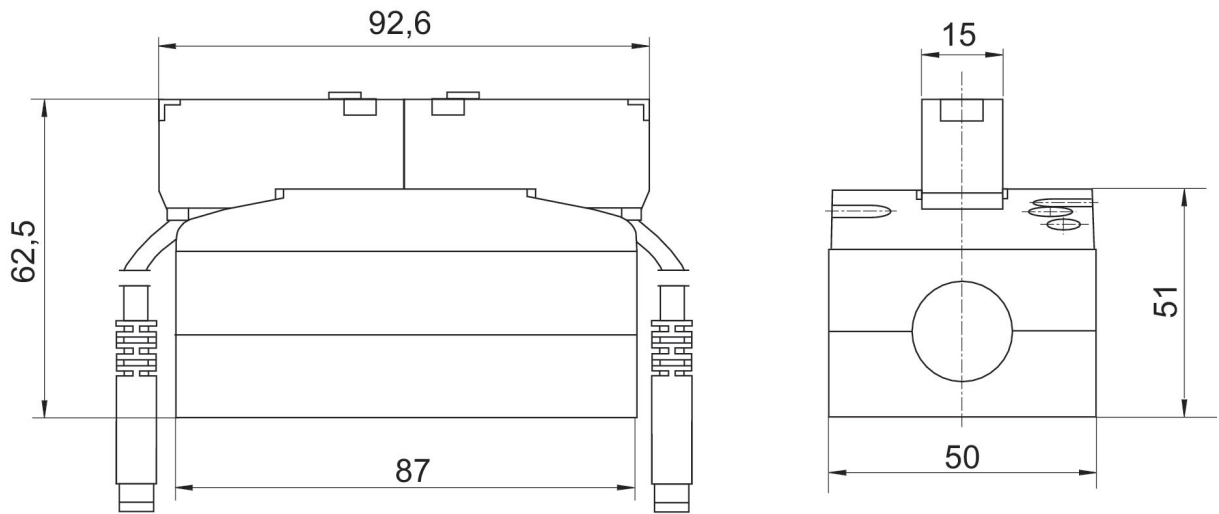
The min. control pressure must be adhered to, since otherwise faulty switching and valve failure may result!

The pressure dew point must be at least 15 °C under ambient and medium temperature and may not exceed 3 °C .

The oil content of compressed air must remain constant during the life cycle.

Use only the approved oils from AVENTICS. Further information can be found in the “Technical information” document (available in <https://www.emerson.com/en-us/support>).

Dimensions



Pin assignment 1) brown (+24 V) 2) green/yellow (ground) 3) blue (0 V)