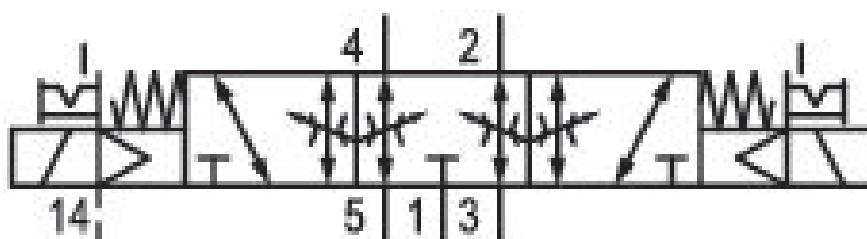
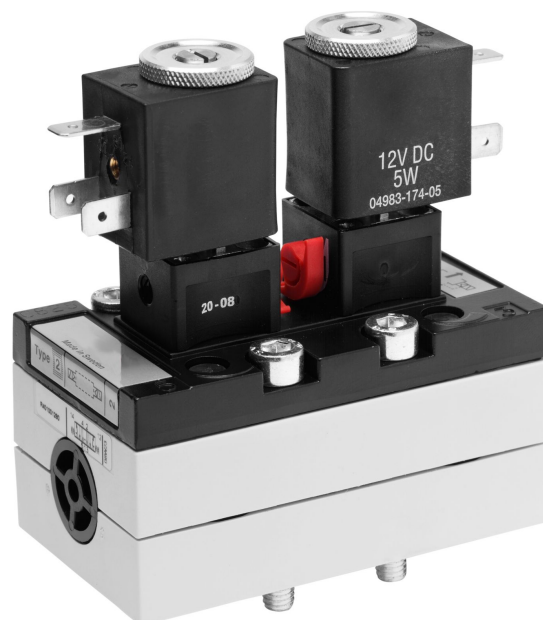


# 5/3-directional valve, Series 581, size 2

## 5812523300

ISO 5599-1, size 2, series 581

■  $Q_n = 2100 \dots 2700 \text{ l/min}$



### Technical data

Industry  
Industrial

Activation  
Electrically

Nominal flow  $Q_n$   
2100 l/min

Switching principle  
5/3

Version  
Exhausted Center

Compressed air connection output  
Base plate ISO 5599-1

Working pressure min.  
-0.95 bar

Working pressure max  
10 bar

Operational voltage AC at 60 Hz  
110 V

Voltage tolerance AC 60 Hz  
-10% / +10%

Manual override  
with detent

Electrical connection type  
Plug

Electrical connection size  
Form B, industry

Sealing principle  
Soft Seal

Pilot	Max. ambient temperature
External	50 °C
Standards	Min. medium temperature
ISO 5599-1	-15 °C
Pilot valve width	Max. medium temperature
22 mm	50 °C
Valve type	Medium
Spool valve	Compressed air
Blocking principle	Max. particle size
Single base plate principle	50 µm
Connection type	Oil content of compressed air min.
Plate connection	0 mg/m <sup>3</sup>
Compressed air connection input	Oil content of compressed air max.
Base plate ISO 5599-1	5 mg/m <sup>3</sup>
Compressed air connection, exhaust	Protection class with connection
Base plate ISO 5599-1	IP65
Compressed air connection pilot exhaust	Duty cycle
M5	100 %
Holding power AC 60 Hz	Typ. switch-on time
8 VA	30 ms
Switch-on power AC 60 Hz	Typ. switch-off time
10 VA	74 ms
Flow conductance C	mounting screws
8.9 l/(s*bar)	with hexagon socket
Throttle	Mounting screw tightening torque
with throttle	3.5 Nm
Frame size	Weight
ISO 2	0.42 kg
Control pressure min.	Housing material
3 bar	Polyamide fiber-glass reinforced
Control pressure max.	Seal material
10 bar	Acrylonitrile butadiene rubber
Min. ambient temperature	Part No.
-15 °C	5812523300

## Technical information

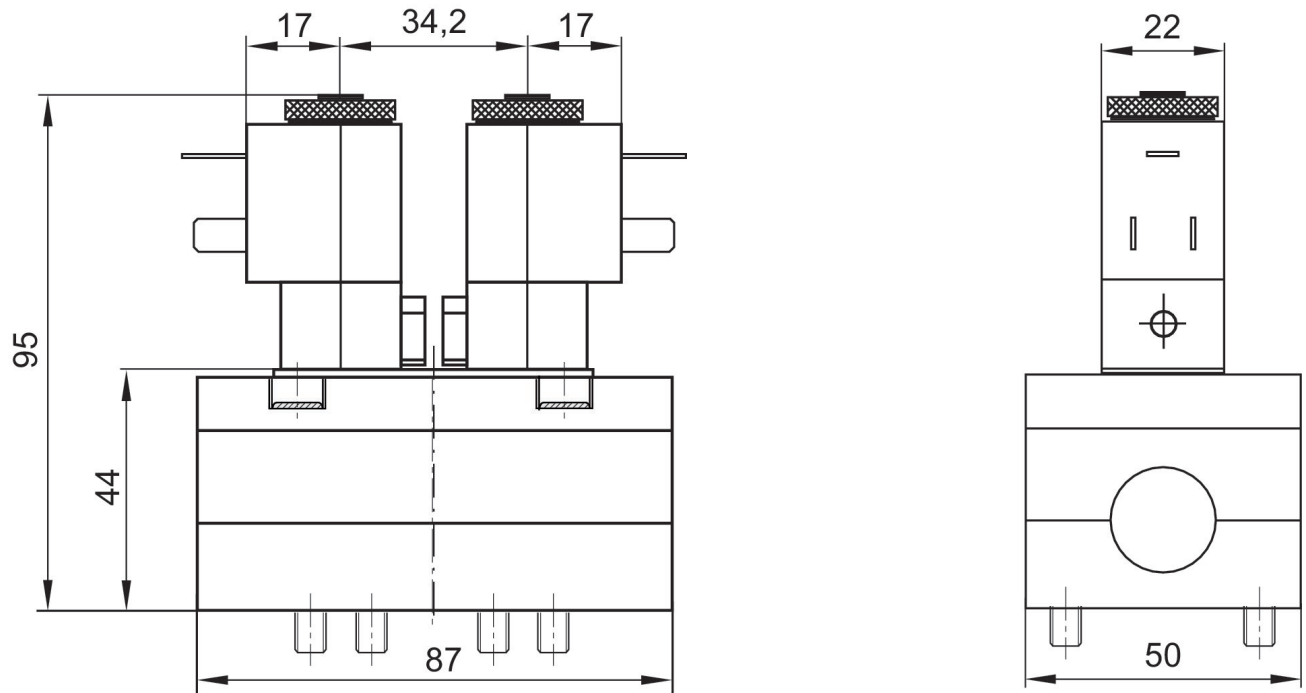
The min. control pressure must be adhered to, since otherwise faulty switching and valve failure may result!

The pressure dew point must be at least 15 °C under ambient and medium temperature and may not exceed 3 °C .

The oil content of compressed air must remain constant during the life cycle.

Use only the approved oils from AVENTICS. Further information can be found in the “Technical information” document (available in <https://www.emerson.com/en-us/support>).

## Dimensions



The pilot valves can be loosened and turned through 180°.