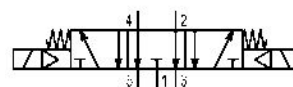


5/3-directional valve, Series 581, size 2

5812590430

ISO 5599-1, size 2, series 581

■ $Q_n = 2100 \dots 2700$ l/min



Technical data

Industry
Industrial

Activation
Electrically

Nominal flow Q_n
2100 l/min

Switching principle
5/3

Version
Exhausted Center

Compressed air connection output
Base plate ISO 5599-1

Working pressure min.
3 bar

Working pressure max
16 bar

Operational voltage AC at 50 Hz
230 V

Voltage tolerance AC 50 Hz
-10% / +10%

Manual override
without

Electrical connection type
Plug

Electrical connection size
EN 175301-803, form A

Sealing principle
Soft Seal

Pilot
Internal

Standards
ISO 5599-1

Pilot valve width
30x22 mm CNOMO

Valve type
Spool valve

Blocking principle	Medium
Single base plate principle	Compressed air
Connection type	Max. particle size
Plate connection	50 µm
Compressed air connection input	Oil content of compressed air min.
Base plate ISO 5599-1	0 mg/m ³
Compressed air connection, exhaust	Oil content of compressed air max.
Base plate ISO 5599-1	5 mg/m ³
Compressed air connection pilot exhaust	Protection class with connection
M5	IP65
Holding power AC 50 Hz	Duty cycle
10.8 VA	100 %
Switch-on power AC 50 Hz	Typ. switch-on time
15.2 VA	17 ms
Flow conductance C	Typ. switch-off time
8.9 l/(s*bar)	36 ms
Frame size	mounting screws
ISO 2	with hexagon socket
Control pressure min.	Mounting screw tightening torque
3 bar	3.5 Nm
Control pressure max.	Weight
16 bar	0.71 kg
Min. ambient temperature	Housing material
-15 °C	Aluminum
Max. ambient temperature	Seal material
50 °C	Acrylonitrile butadiene rubber
Min. medium temperature	Part No.
-15 °C	5812590430
Max. medium temperature	
50 °C	

Technical information

The min. control pressure must be adhered to, since otherwise faulty switching and valve failure may result!

The pressure dew point must be at least 15 °C under ambient and medium temperature and may not exceed 3 °C .

The oil content of compressed air must remain constant during the life cycle.

Use only the approved oils from AVENTICS. Further information can be found in the “Technical information” document (available in <https://www.emerson.com/en-us/support>).

Dimensions

