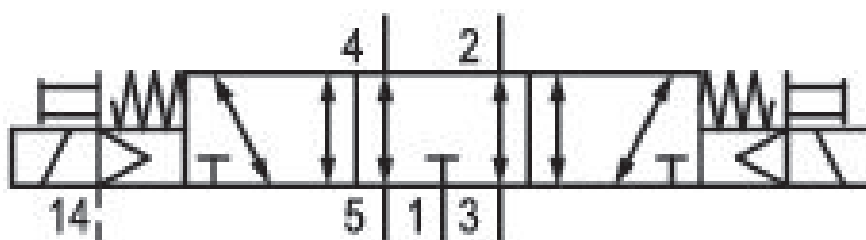


# 5/3-directional valve, Series 581, size 2

## 5812592440

ISO 5599-1, size 2, series 581

- $Q_n = 2100 \dots 2700$  l/min



### Technical data

Industry  
Industrial

Activation  
Electrically

Nominal flow  $Q_n$   
2100 l/min

Switching principle  
5/3

Version  
Exhausted Center

Compressed air connection output  
Base plate ISO 5599-1

Working pressure min.  
-0.95 bar

Working pressure max  
16 bar

Operational voltage AC at 50 Hz  
230 V

Voltage tolerance AC 50 Hz  
-10% / +10%

Manual override  
without detent

Electrical connection type  
Plug

Electrical connection size  
EN 175301-803, form A

Sealing principle  
Soft Seal

Pilot  
External

Standards  
ISO 5599-1

Pilot valve width  
30x22 mm CNOMO

Valve type  
Spool valve

Blocking principle  
Single base plate principle

Connection type  
Plate connection

Compressed air connection input Base plate ISO 5599-1	Max. particle size 50 µm
Compressed air connection, exhaust Base plate ISO 5599-1	Oil content of compressed air min. 0 mg/m <sup>3</sup>
Compressed air connection pilot exhaust M5	Oil content of compressed air max. 5 mg/m <sup>3</sup>
Holding power AC 50 Hz 10.8 VA	Protection class with connection IP65
Switch-on power AC 50 Hz 15.2 VA	Duty cycle 100 %
Flow conductance C 8.9 l/(s*bar)	Typ. switch-on time 17 ms
Frame size ISO 2	Typ. switch-off time 36 ms
Control pressure min. 3 bar	mounting screws with hexagon socket
Control pressure max. 16 bar	Mounting screw tightening torque 3.5 Nm
Min. ambient temperature -15 °C	Weight 0.71 kg
Max. ambient temperature 50 °C	Housing material Aluminum
Min. medium temperature -15 °C	Seal material Acrylonitrile butadiene rubber
Max. medium temperature 50 °C	Part No. 5812592440
Medium Compressed air	

## Technical information

The min. control pressure must be adhered to, since otherwise faulty switching and valve failure may result!

The pressure dew point must be at least 15 °C under ambient and medium temperature and may not exceed 3 °C .

The oil content of compressed air must remain constant during the life cycle.

Use only the approved oils from AVENTICS. Further information can be found in the “Technical information” document (available in <https://www.emerson.com/en-us/support>).

## Dimensions

