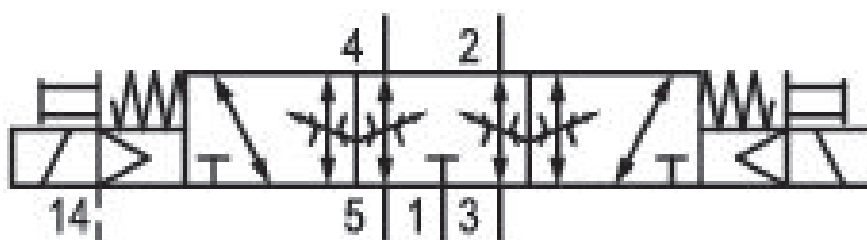


5/3-directional valve, Series 581, size 2

5812593540

ISO 5599-1, size 2, series 581

■ $Q_n = 2100 \dots 2700$ l/min



Technical data

Industry
Industrial

Activation
Electrically

Nominal flow Q_n
2100 l/min

Switching principle
5/3

Version
Exhausted Center

Compressed air connection output
Base plate ISO 5599-1

Working pressure min.
-0.95 bar

Working pressure max
16 bar

DC operating voltage
24 V

Operational voltage AC at 50 Hz
42 V

Voltage tolerance DC
-10% / +10%

Voltage tolerance AC 50 Hz
-10% / +10%

Manual override
without detent

Electrical connection type
Plug

Electrical connection size
EN 175301-803, form A

Sealing principle
Soft Seal

Pilot
External

Standards
ISO 5599-1

Pilot valve width
30x22 mm CNOMO

Valve type
Spool valve

Blocking principle Single base plate principle	Max. medium temperature 50 °C
Connection type Plate connection	Medium Compressed air
Compressed air connection input Base plate ISO 5599-1	Max. particle size 50 µm
Compressed air connection, exhaust Base plate ISO 5599-1	Oil content of compressed air min. 0 mg/m ³
Compressed air connection pilot exhaust M5	Oil content of compressed air max. 5 mg/m ³
Power consumption DC 6.7 W	Protection class with connection IP65
Holding power AC 50 Hz 7.7 VA	Duty cycle 100 %
Switch-on power AC 50 Hz 12 VA	Typ. switch-on time 17 ms
Flow conductance C 8.9 l/(s*bar)	Typ. switch-off time 36 ms
Throttle with throttle	mounting screws with hexagon socket
Frame size ISO 2	Mounting screw tightening torque 3.5 Nm
Control pressure min. 3 bar	Weight 0.71 kg
Control pressure max. 16 bar	Housing material Aluminum
Min. ambient temperature -15 °C	Seal material Acrylonitrile butadiene rubber
Max. ambient temperature 50 °C	Part No. 5812593540
Min. medium temperature -15 °C	

Technical information

The min. control pressure must be adhered to, since otherwise faulty switching and valve failure may result!

The pressure dew point must be at least 15 °C under ambient and medium temperature and may not exceed 3 °C .

The oil content of compressed air must remain constant during the life cycle.

Use only the approved oils from AVENTICS. Further information can be found in the “Technical information” document (available in <https://www.emerson.com/en-us/support>).

Dimensions

