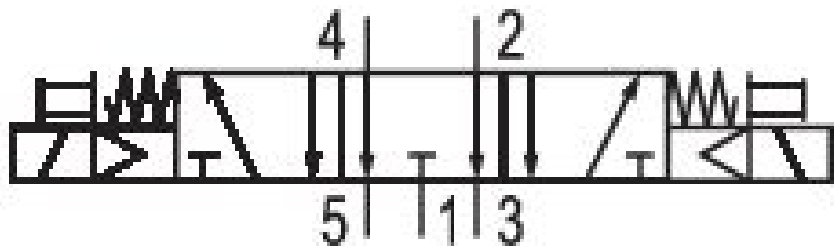


5/3-directional valve, Series 581, size 4

5814590540

ISO 5599-1, size 4, series 581

- $Q_n = 5000 \dots 6000 \text{ l/min}$



Technical data

Industry

Industrial

Activation

Electrically

Nominal flow Q_n

5000 l/min

Switching principle

5/3

Version

Exhausted Center

Compressed air connection output

Base plate ISO 5599-1

Working pressure min.

3 bar

Working pressure max

16 bar

DC operating voltage

24 V

Operational voltage AC at 50 Hz

42 V

Voltage tolerance DC

-10% / +10%

Voltage tolerance AC 50 Hz

-10% / +10%

Manual override

without detent

Electrical connection type

Plug

Electrical connection size EN 175301-803, form A	Min. ambient temperature -15 °C
Sealing principle Soft Seal	Max. ambient temperature 50 °C
Pilot Internal	Min. medium temperature -15 °C
Standards ISO 5599-1	Max. medium temperature 50 °C
Pilot valve width 30x22 mm CNOMO	Medium Compressed air
Valve type Spool valve	Max. particle size 50 µm
Blocking principle Single base plate principle	Oil content of compressed air min. 0 mg/m ³
Connection type Plate connection	Oil content of compressed air max. 5 mg/m ³
Compressed air connection input Base plate ISO 5599-1	Protection class with connection IP65
Compressed air connection, exhaust Base plate ISO 5599-1	Duty cycle 100 %
Compressed air connection pilot exhaust M5	Typ. switch-on time 26 ms
Power consumption DC 6.7 W	Typ. switch-off time 68 ms
Holding power AC 50 Hz 7.7 VA	mounting screws with hexagon socket
Switch-on power AC 50 Hz 12 VA	Mounting screw tightening torque 10 Nm
Flow conductance C 15.5 l/(s*bar)	Weight 1.57 kg
Frame size ISO 4	Housing material Aluminum
Control pressure min. 3 bar	Seal material Acrylonitrile butadiene rubber
Control pressure max. 16 bar	Part No. 5814590540

Technical information

The min. control pressure must be adhered to, since otherwise faulty switching and valve failure may result!

The pressure dew point must be at least 15 °C under ambient and medium temperature and may not exceed 3 °C .

The oil content of compressed air must remain constant during the life cycle.

Use only the approved oils from AVENTICS. Further information can be found in the “Technical information” document (available in <https://www.emerson.com/en-us/support>).

Dimensions

