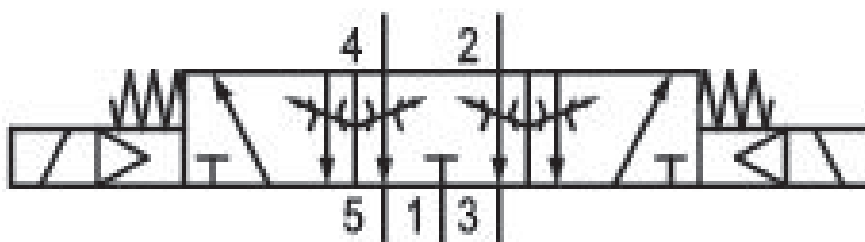


# 5/3-directional valve, Series 581, size 3

## 5813581000

ISO 5599-1, size 3, series 581

■  $Q_n = 4100 \dots 4800 \text{ l/min}$



### Technical data

**Industry**  
Industrial

**Activation**  
Electrically

**Nominal flow  $Q_n$**   
4100 l/min

**Switching principle**  
5/3

**Version**  
Closed Center

**Compressed air connection output**  
Base plate ISO 5599-1

**Working pressure min.**  
-0.95 bar

**Working pressure max**  
16 bar

**Sealing principle**  
Soft Seal

**Pilot**  
External  
Internal

**Standards**  
ISO 5599-1

**Pilot valve width**  
30 mm

**Valve type**  
Spool valve

**Blocking principle**  
Single base plate principle

**Connection type**  
Plate connection

**Compressed air connection input**  
Base plate ISO 5599-1

**Compressed air connection, exhaust**  
Base plate ISO 5599-1

**Flow conductance C**  
 $14.1 \text{ l/(s*bar)}$

Throttle with throttle	Oil content of compressed air min. 0 mg/m <sup>3</sup>
basic valve with electrical connector Basic valve without pilot valve	Oil content of compressed air max. 5 mg/m <sup>3</sup>
Frame size ISO 3	Protection class with connection IP65
Control pressure min. 3 bar	Duty cycle 100 %
Control pressure max. 16 bar	mounting screws with hexagon socket
Min. ambient temperature -20 °C	Mounting screw tightening torque 10 Nm
Max. ambient temperature 70 °C	Weight 0.85 kg
Min. medium temperature -20 °C	Housing material Aluminum
Max. medium temperature 70 °C	Seal material Acrylonitrile butadiene rubber
Medium Compressed air	Part No. 5813581000
Max. particle size 50 µm	

## Technical information

\* Note: ATEX version can be produced by combining the basic valve without coil with a series DO30 CNOMO pilot valve and an ATEX coil. ATEX ID: see ATEX coils catalog page.

The min. control pressure must be adhered to, since otherwise faulty switching and valve failure may result!

The pressure dew point must be at least 15 °C under ambient and medium temperature and may not exceed 3 °C .

The oil content of compressed air must remain constant during the life cycle.

Use only the approved oils from AVENTICS. Further information can be found in the "Technical information" document (available in <https://www.emerson.com/en-us/support>).

## Dimensions

