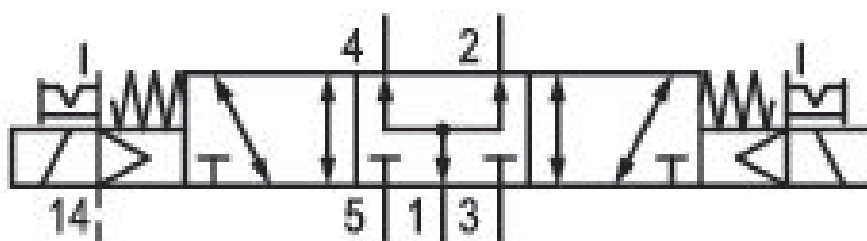


5/3-directional valve, Series 581, size 4

5814722500

ISO 5599-1, size 4, series 581

- $Q_n = 5000 \dots 6000 \text{ l/min}$



Technical data

Industry
Industrial

Activation
Electrically

Nominal flow Q_n
5000 l/min

Switching principle
5/3

Version
Pressurized Center

Compressed air connection output
Base plate ISO 5599-1

Working pressure min.
-0.95 bar

Working pressure max
10 bar

DC operating voltage
12 V

Voltage tolerance DC
-10% / +10%

Manual override
with detent

Electrical connection type
Plug

Electrical connection size
Form B, industry

Sealing principle
Soft Seal

Pilot	Min. medium temperature
External	-15 °C
Standards	Max. medium temperature
ISO 5599-1	50 °C
Pilot valve width	Medium
22 mm	Compressed air
Valve type	Max. particle size
Spool valve	50 µm
Blocking principle	Oil content of compressed air min.
Single base plate principle	0 mg/m ³
Connection type	Oil content of compressed air max.
Plate connection	5 mg/m ³
Compressed air connection input	Protection class with connection
Base plate ISO 5599-1	IP65
Compressed air connection, exhaust	Duty cycle
Base plate ISO 5599-1	100 %
Compressed air connection pilot exhaust	Typ. switch-on time
M5	30 ms
Power consumption DC	Typ. switch-off time
5 W	74 ms
Flow conductance C	mounting screws
15.5 l/(s*bar)	with hexagon socket
Frame size	Mounting screw tightening torque
ISO 4	10 Nm
Control pressure min.	Weight
3 bar	1.44 kg
Control pressure max.	Housing material
10 bar	Aluminum
Min. ambient temperature	Seal material
-15 °C	Acrylonitrile butadiene rubber
Max. ambient temperature	Part No.
50 °C	5814722500

Technical information

The min. control pressure must be adhered to, since otherwise faulty switching and valve failure may result!

The pressure dew point must be at least 15 °C under ambient and medium temperature and may not exceed 3 °C .

The oil content of compressed air must remain constant during the life cycle.

Use only the approved oils from AVENTICS. Further information can be found in the “Technical information” document (available in <https://www.emerson.com/en-us/support>).

Dimensions



The pilot valves can be loosened and turned through 180°.