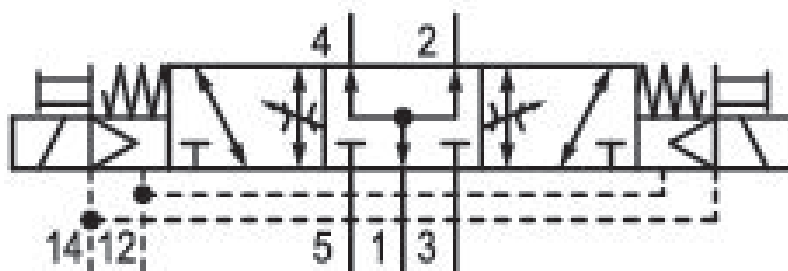
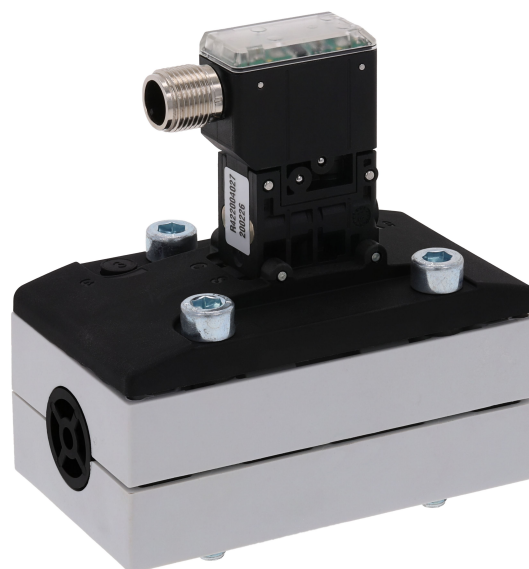


# 5/3-directional valve, Series 581, size 2

## 5812723720

General series information  
AVENTICS Series 581 - Size 2 Standardized valves

- The AVENTICS series 581 complies with the ISO 5599-1 valve standard. Due to the high degree of modularity, the series offers all valve functions, integrated throttle valves, various pilot coils and an extensive range of accessories.



### Technical data

Industry	Industrial
Activation	Electrically
Nominal flow $Q_n$	2100 l/min
Switching principle	5/3
Version	Pressurized Center
Compressed air connection output	Base plate ISO 5599-1
Working pressure min.	-0.95 bar
Working pressure max	10 bar
DC operating voltage	24 V
Voltage tolerance DC	-10% / +10%
Manual override	without detent
Electrical connection type	Plug

Electrical connection size	M12
Electr. connection	4-pin
Sealing principle	soft seal
Pilot	External
Standards	ISO 5599-1
Pilot valve width	22 mm
Valve type	Spool valve
Blocking principle	Single base plate principle
Connection type	Plate connection
Compressed air connection input	Base plate ISO 5599-1
Compressed air connection, exhaust	Base plate ISO 5599-1
Compressed air connection pilot exhaust	M5
Power consumption DC	0.35 W
Flow conductance C	8.9 l/(s*bar)
Throttle	with throttle
Frame size	ISO 2
Control pressure min.	3 bar
Control pressure max.	10 bar
Min. ambient temperature	0 °C
Max. ambient temperature	50 °C
Min. medium temperature	0 °C
Max. medium temperature	50 °C
Medium	Compressed air
Max. particle size	5 µm
Oil content of compressed air min.	0 mg/m <sup>3</sup>
Oil content of compressed air max.	5 mg/m <sup>3</sup>
Protection class with connection	IP65
Duty cycle	100 %
Typ. switch-on time	15 ms
Typ. switch-off time	35 ms
mounting screws	with hexagon socket
Mounting screw tightening torque	3.5 Nm
Weight	0.28 kg
Housing material	Polyamide fiber-glass reinforced
Seal material	Acrylonitrile butadiene rubber
Part No.	5812723720

## Technical information

Switch-on power: 1 W for 40 ms

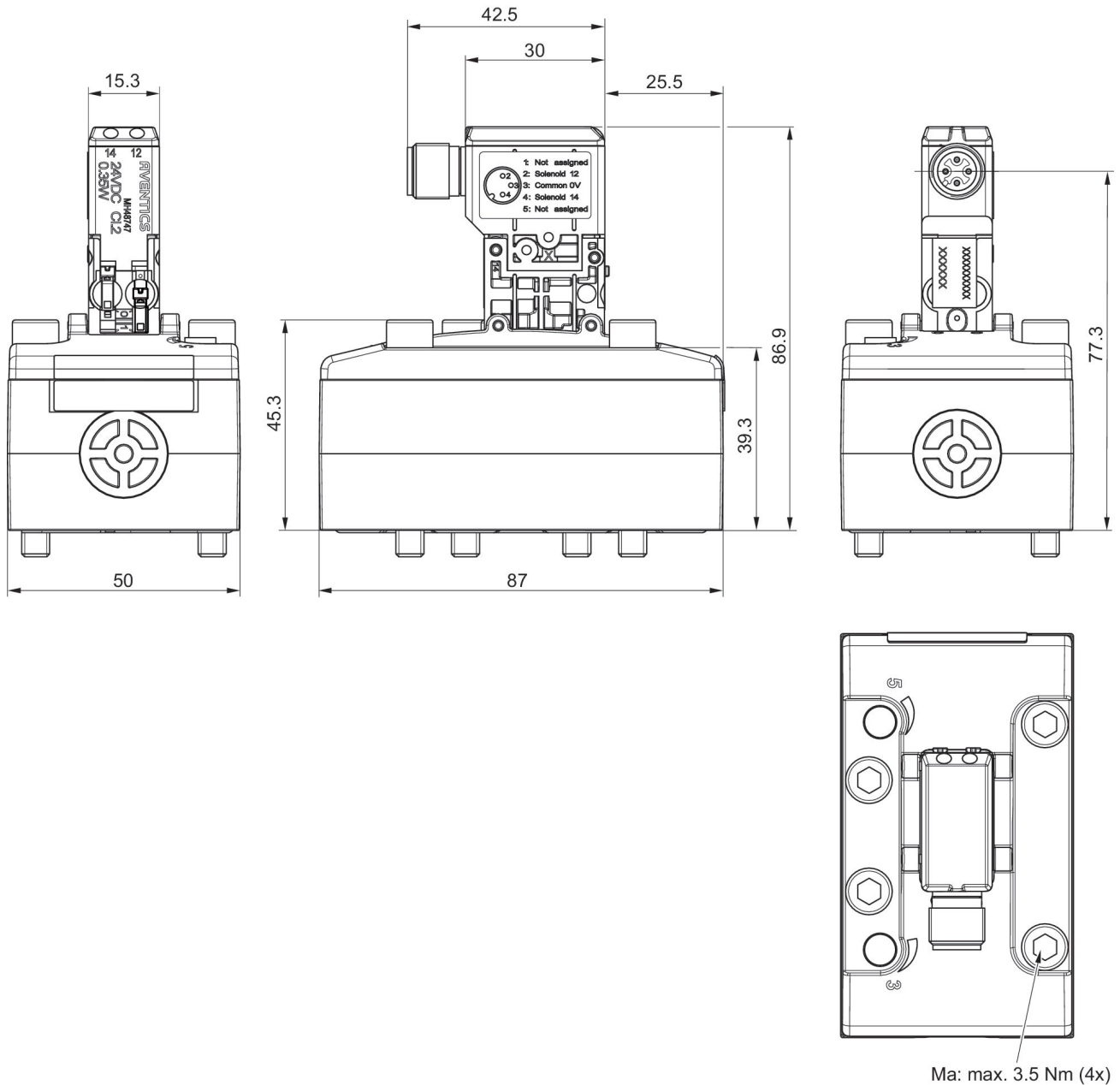
The min. control pressure must be adhered to, since otherwise faulty switching and valve failure may result!

The pressure dew point must be at least 15 °C less than ambient and medium temperature and may not exceed 3 °C.

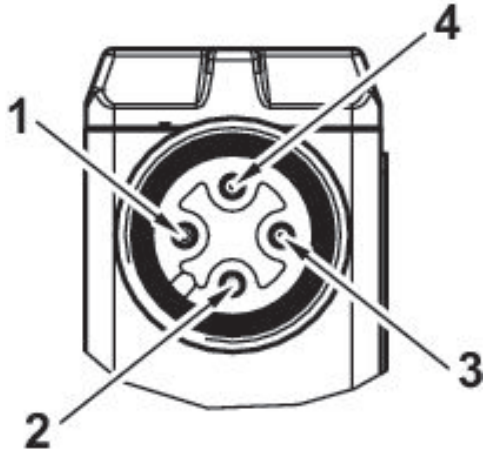
The oil content of compressed air must remain constant during the life cycle.

Use only the approved oils from AVENTICS. Further information can be found in the "Technical information" document (available in <https://www.emerson.com/en-us/support>).

## Dimensions



## Pin assignments



- 
- 1) not assigned
  - 2) Coil 12
  - 3) 0 V DC
  - 4) Coil 14