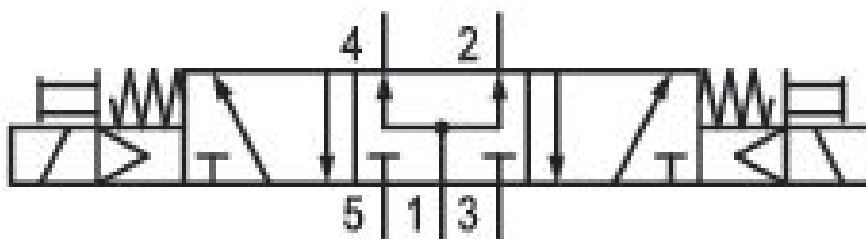


# 5/3-directional valve, Series 581, size 4

## 5814790190

ISO 5599-1, size 4, series 581

- $Q_n = 5000 \dots 6000$  l/min



### Technical data

Industry  
Industrial

Activation  
Electrically

Nominal flow  $Q_n$   
5000 l/min

Switching principle  
5/3

Version  
Pressurized Center

Compressed air connection output  
Base plate ISO 5599-1

Working pressure min.  
3 bar

Working pressure max  
10 bar

DC operating voltage  
24 V

Voltage tolerance DC  
-10% / +10%

Manual override  
without detent

Electrical connection type  
Plug

Electrical connection size  
EN 175301-803, form A

Sealing principle  
Soft Seal

Pilot Internal	Min. medium temperature -15 °C
Standards ISO 5599-1	Max. medium temperature 50 °C
Pilot valve width 30x30 mm CNOMO	Medium Compressed air
Valve type Spool valve	Max. particle size 50 µm
Blocking principle Single base plate principle	Oil content of compressed air min. 0 mg/m <sup>3</sup>
Connection type Plate connection	Oil content of compressed air max. 5 mg/m <sup>3</sup>
Compressed air connection input Base plate ISO 5599-1	Protection class with connection IP65
Compressed air connection, exhaust Base plate ISO 5599-1	Duty cycle 100 %
Compressed air connection pilot exhaust G 1/8	Typ. switch-on time 26 ms
Power consumption DC 6 W	Typ. switch-off time 68 ms
Flow conductance C 15.5 l/(s*bar)	mounting screws with hexagon socket
Frame size ISO 4	Mounting screw tightening torque 10 Nm
Control pressure min. 3 bar	Weight 1.65 kg
Control pressure max. 10 bar	Housing material Aluminum
Min. ambient temperature -15 °C	Seal material Acrylonitrile butadiene rubber
Max. ambient temperature 50 °C	Part No. 5814790190

## Technical information

The min. control pressure must be adhered to, since otherwise faulty switching and valve failure may result!

The pressure dew point must be at least 15 °C under ambient and medium temperature and may not exceed 3 °C .

The oil content of compressed air must remain constant during the life cycle.

Use only the approved oils from AVENTICS. Further information can be found in the “Technical information” document (available in <https://www.emerson.com/en-us/support>).

## Dimensions

