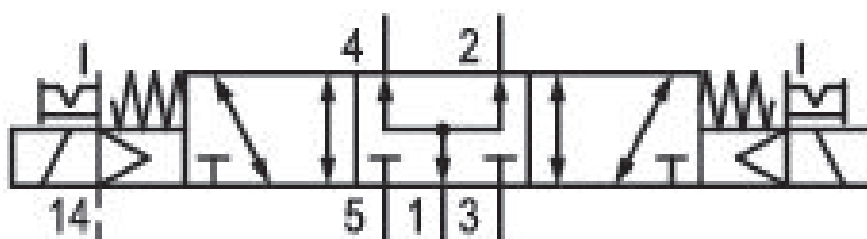


5/3-directional valve, Series 581, size 4

5814722300

ISO 5599-1, size 4, series 581

- $Q_n = 5000 \dots 6000 \text{ l/min}$



Technical data

Industry
Industrial

Activation
Electrically

Nominal flow Q_n
5000 l/min

Switching principle
5/3

Version
Pressurized Center

Compressed air connection output
Base plate ISO 5599-1

Working pressure min.
-0.95 bar

Working pressure max
10 bar

Operational voltage AC at 60 Hz
110 V

Voltage tolerance AC 60 Hz
-10% / +10%

Manual override
with detent

Electrical connection type
Plug

Electrical connection size
Form B, industry

Sealing principle
Soft Seal

| | |
|---|------------------------------------|
| Pilot | Min. medium temperature |
| External | -15 °C |
| Standards | Max. medium temperature |
| ISO 5599-1 | 50 °C |
| Pilot valve width | Medium |
| 22 mm | Compressed air |
| Valve type | Max. particle size |
| Spool valve | 50 µm |
| Blocking principle | Oil content of compressed air min. |
| Single base plate principle | 0 mg/m ³ |
| Connection type | Oil content of compressed air max. |
| Plate connection | 5 mg/m ³ |
| Compressed air connection input | Protection class with connection |
| Base plate ISO 5599-1 | IP65 |
| Compressed air connection, exhaust | Duty cycle |
| Base plate ISO 5599-1 | 100 % |
| Compressed air connection pilot exhaust | Typ. switch-on time |
| M5 | 30 ms |
| Holding power AC 60 Hz | Typ. switch-off time |
| 8 VA | 74 ms |
| Switch-on power AC 60 Hz | mounting screws |
| 10 VA | with hexagon socket |
| Flow conductance C | Mounting screw tightening torque |
| 15.5 l/(s*bar) | 10 Nm |
| Frame size | Weight |
| ISO 4 | 1.44 kg |
| Control pressure min. | Housing material |
| 3 bar | Aluminum |
| Control pressure max. | Seal material |
| 10 bar | Acrylonitrile butadiene rubber |
| Min. ambient temperature | Part No. |
| -15 °C | 5814722300 |
| Max. ambient temperature | |
| 50 °C | |

Technical information

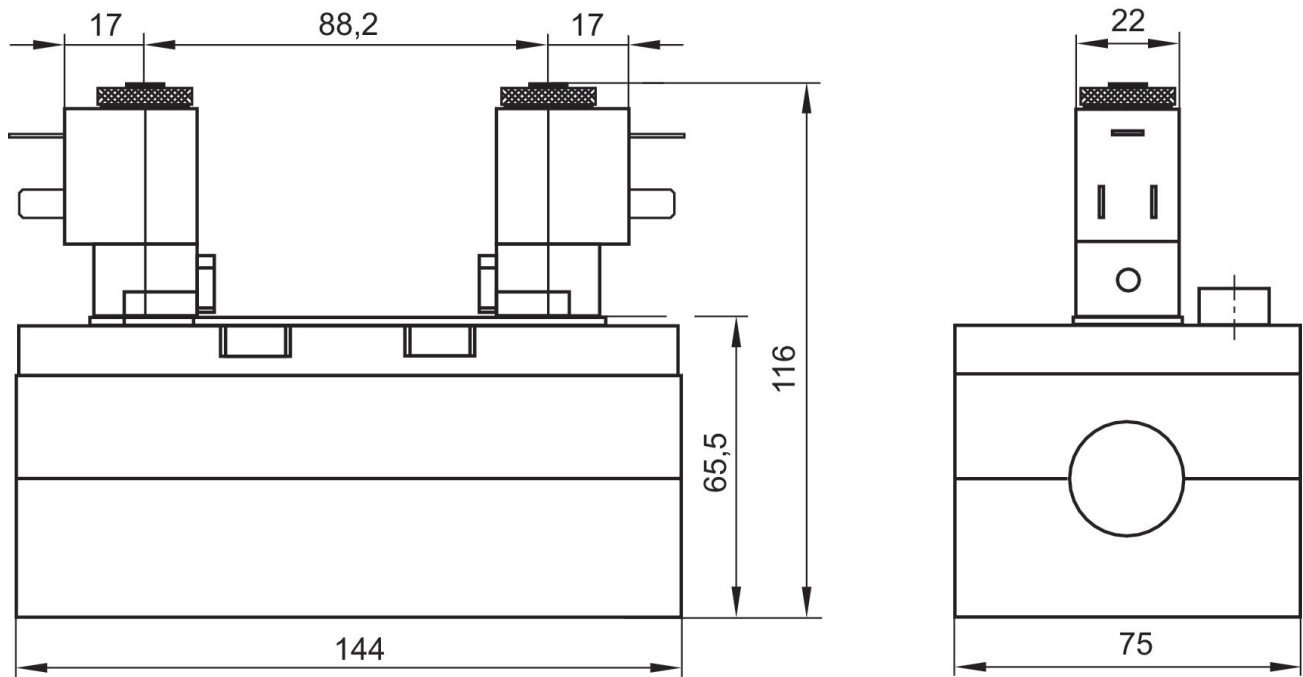
The min. control pressure must be adhered to, since otherwise faulty switching and valve failure may result!

The pressure dew point must be at least 15 °C under ambient and medium temperature and may not exceed 3 °C .

The oil content of compressed air must remain constant during the life cycle.

Use only the approved oils from AVENTICS. Further information can be found in the “Technical information” document (available in <https://www.emerson.com/en-us/support>).

Dimensions



The pilot valves can be loosened and turned through 180°.