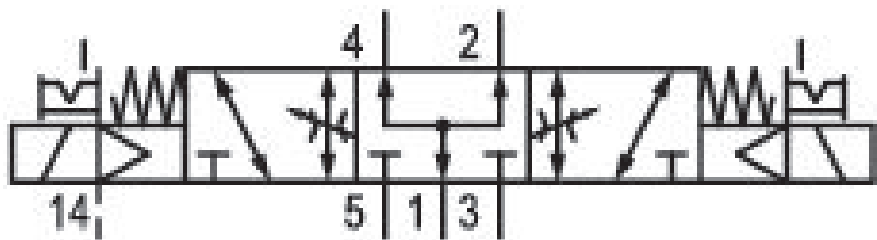


5/3-directional valve, Series 581, size 3

5813723400

ISO 5599-1, size 3, series 581

■ $Q_n = 4100 \dots 4800 \text{ l/min}$



Technical data

Industry
Industrial

Activation
Electrically

Nominal flow Q_n
4100 l/min

Switching principle
5/3

Version
Pressurized Center

Compressed air connection output
Base plate ISO 5599-1

Working pressure min.
-0.95 bar

Working pressure max
10 bar

Operational voltage AC at 50 Hz
230 V

Voltage tolerance AC 50 Hz
-10% / +10%

Manual override
with detent

Electrical connection type
Plug

Electrical connection size
Form B, industry

Sealing principle
Soft Seal

Pilot	Max. ambient temperature
External	50 °C
Standards	Min. medium temperature
ISO 5599-1	-15 °C
Pilot valve width	Max. medium temperature
22 mm	50 °C
Valve type	Medium
Spool valve	Compressed air
Blocking principle	Max. particle size
Single base plate principle	50 µm
Connection type	Oil content of compressed air min.
Plate connection	0 mg/m ³
Compressed air connection input	Oil content of compressed air max.
Base plate ISO 5599-1	5 mg/m ³
Compressed air connection, exhaust	Protection class with connection
Base plate ISO 5599-1	IP65
Compressed air connection pilot exhaust	Duty cycle
M5	100 %
Holding power AC 50 Hz	Typ. switch-on time
8 VA	23 ms
Switch-on power AC 50 Hz	Typ. switch-off time
10 VA	64 ms
Flow conductance C	mounting screws
14.1 l/(s*bar)	with hexagon socket
Throttle	Mounting screw tightening torque
with throttle	10 Nm
Frame size	Weight
ISO 3	1.01 kg
Control pressure min.	Housing material
3 bar	Aluminum
Control pressure max.	Seal material
10 bar	Acrylonitrile butadiene rubber
Min. ambient temperature	Part No.
-15 °C	5813723400

Technical information

The min. control pressure must be adhered to, since otherwise faulty switching and valve failure may result!

The pressure dew point must be at least 15 °C under ambient and medium temperature and may not exceed 3 °C .

The oil content of compressed air must remain constant during the life cycle.

Use only the approved oils from AVENTICS. Further information can be found in the “Technical information” document (available in <https://www.emerson.com/en-us/support>).

Dimensions



The pilot valves can be loosened and turned through 180°.