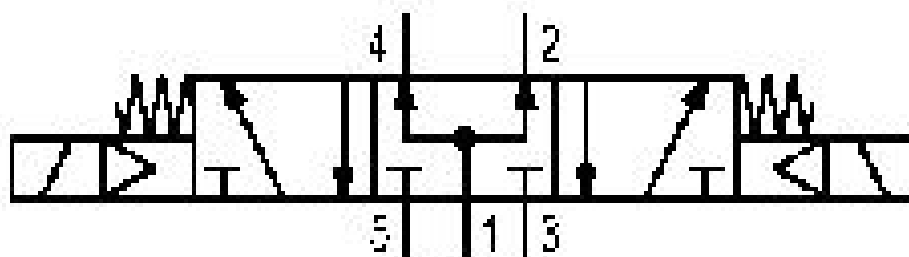


5/3-directional valve, Series 581, size 2

5812780000

ISO 5599-1, size 2, series 581

■ $Q_n = 2100 \dots 2700 \text{ l/min}$



Technical data

Industry
Industrial

Activation
Electrically

Nominal flow Q_n
2100 l/min

Switching principle
5/3

Version
Pressurized Center

Compressed air connection output
Base plate ISO 5599-1

Working pressure min.
-0.95 bar

Working pressure max
16 bar

Sealing principle
Soft Seal

Pilot
External
Internal

Standards
ISO 5599-1

Pilot valve width
30 mm

Valve type
Spool valve

Blocking principle
Single base plate principle

Connection type Plate connection	Medium Compressed air
Compressed air connection input Base plate ISO 5599-1	Max. particle size 50 µm
Compressed air connection, exhaust Base plate ISO 5599-1	Oil content of compressed air min. 0 mg/m ³
Flow conductance C 8.9 l/(s*bar)	Oil content of compressed air max. 5 mg/m ³
basic valve with electrical connector Basic valve without pilot valve	Protection class with connection IP65
Frame size ISO 2	Duty cycle 100 %
Control pressure min. 3 bar	mounting screws with hexagon socket
Control pressure max. 16 bar	Mounting screw tightening torque 3.5 Nm
Min. ambient temperature -20 °C	Weight 0.42 kg
Max. ambient temperature 70 °C	Housing material Aluminum
Min. medium temperature -20 °C	Seal material Acrylonitrile butadiene rubber
Max. medium temperature 70 °C	Part No. 5812780000

Technical information

* Note: ATEX version can be produced by combining the basic valve without coil with a series DO30 CNOMO pilot valve and an ATEX coil. ATEX ID: see ATEX coils catalog page.

The min. control pressure must be adhered to, since otherwise faulty switching and valve failure may result!

The pressure dew point must be at least 15 °C under ambient and medium temperature and may not exceed 3 °C .

The oil content of compressed air must remain constant during the life cycle.

Use only the approved oils from AVENTICS. Further information can be found in the “Technical information” document (available in <https://www.emerson.com/en-us/support>).

Dimensions

