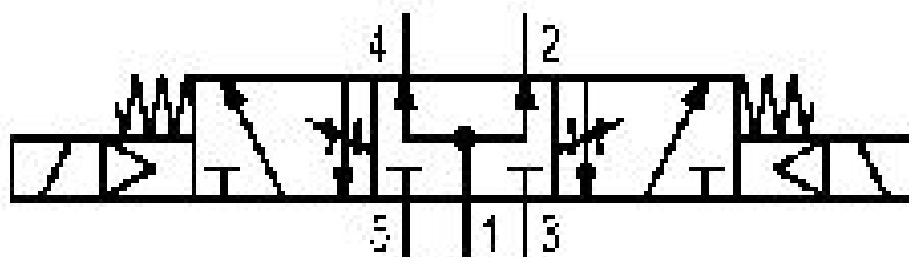


# 5/3-directional valve, Series 581, size 2

## 5812781000

ISO 5599-1, size 2, series 581

■  $Q_n = 2100 \dots 2700 \text{ l/min}$



### Technical data

Industry  
Industrial

Activation  
Electrically

Nominal flow  $Q_n$   
2100 l/min

Switching principle  
5/3

Version  
Pressurized Center

Compressed air connection output  
Base plate ISO 5599-1

Working pressure min.  
-0.95 bar

Working pressure max  
16 bar

Sealing principle  
Soft Seal

Pilot  
External  
Internal

Standards  
ISO 5599-1

Pilot valve width  
30 mm

Valve type  
Spool valve

Blocking principle  
Single base plate principle

Connection type Plate connection	Medium Compressed air
Compressed air connection input Base plate ISO 5599-1	Max. particle size 50 µm
Compressed air connection, exhaust Base plate ISO 5599-1	Oil content of compressed air min. 0 mg/m <sup>3</sup>
Flow conductance C 8.9 l/(s*bar)	Oil content of compressed air max. 5 mg/m <sup>3</sup>
Throttle with throttle	Protection class with connection IP65
basic valve with electrical connector Basic valve without pilot valve	Duty cycle 100 %
Frame size ISO 2	mounting screws with hexagon socket
Control pressure min. 3 bar	Mounting screw tightening torque 3.5 Nm
Control pressure max. 16 bar	Weight 0.42 kg
Min. ambient temperature -20 °C	Housing material Aluminum
Max. ambient temperature 70 °C	Seal material Acrylonitrile butadiene rubber
Min. medium temperature -20 °C	Part No. 5812781000
Max. medium temperature 70 °C	

## Technical information

\* Note: ATEX version can be produced by combining the basic valve without coil with a series DO30 CNOMO pilot valve and an ATEX coil. ATEX ID: see ATEX coils catalog page.

The min. control pressure must be adhered to, since otherwise faulty switching and valve failure may result!

The pressure dew point must be at least 15 °C under ambient and medium temperature and may not exceed 3 °C .

The oil content of compressed air must remain constant during the life cycle.

Use only the approved oils from AVENTICS. Further information can be found in the “Technical information” document (available in <https://www.emerson.com/en-us/support>).

## Dimensions

