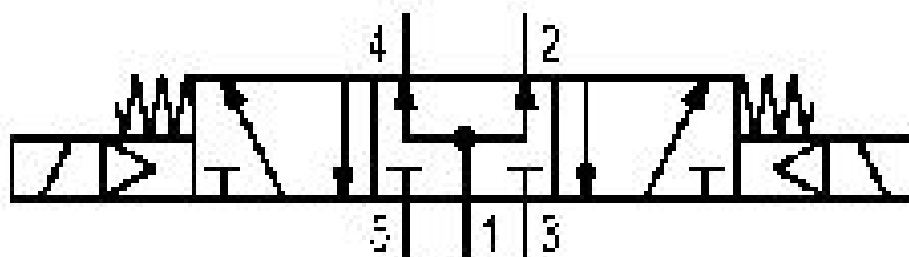


# 5/3-directional valve, Series 581, size 2

## 5812780080

ISO 5599-1, size 2, series 581

■  $Q_n = 2100 \dots 2700 \text{ l/min}$



### Technical data

Industry

Industrial

Activation

Electrically

Nominal flow  $Q_n$

2100 l/min

Compressed air connection output

Base plate ISO 5599-1

Working pressure min.

-0.95 bar

Working pressure max

10 bar

Sealing principle

Soft Seal

Pilot

External

Internal

Standards

ISO 5599-1

Pilot valve width

30 mm

Valve type

Spool valve

Blocking principle

Single base plate principle

Connection type

Plate connection

Compressed air connection input

Base plate ISO 5599-1

**Compressed air connection, exhaust**

Base plate ISO 5599-1

**Flow conductance C**

8.9 l/(s\*bar)

**basic valve with electrical connector**

Basic valve without pilot valve

**Frame size**

ISO 2

**Control pressure min.**

3 bar

**Control pressure max.**

10 bar

**Min. ambient temperature**

-15 °C

**Max. ambient temperature**

50 °C

**Min. medium temperature**

-15 °C

**Max. medium temperature**

50 °C

**Medium**

Compressed air

**Max. particle size**

50 µm

**Oil content of compressed air min.**

0 mg/m<sup>3</sup>

**Oil content of compressed air max.**

5 mg/m<sup>3</sup>

**Protection class with connection**

IP65

**Duty cycle**

100 %

**mounting screws**

with hexagon socket

**Mounting screw tightening torque**

3.5 Nm

**Weight**

0.42 kg

**Housing material**

Polyamide

**Seal material**

Acrylonitrile butadiene rubber

**Part No.**

5812780080

## Technical information

The min. control pressure must be adhered to, since otherwise faulty switching and valve failure may result!

The pressure dew point must be at least 15 °C under ambient and medium temperature and may not exceed 3 °C .

The oil content of compressed air must remain constant during the life cycle.

Use only the approved oils from AVENTICS. Further information can be found in the "Technical information" document (available in <https://www.emerson.com/en-us/support>).

