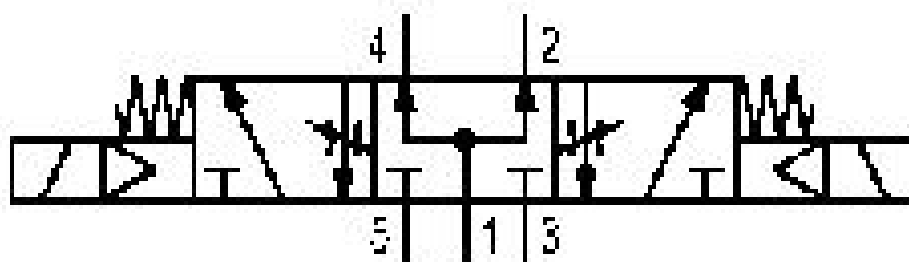


5/3-directional valve, Series 581, size 3

5813781000

ISO 5599-1, size 3, series 581

■ $Q_n = 4100 \dots 4800 \text{ l/min}$



Technical data

Industry
Industrial

Activation
Electrically

Nominal flow Q_n
4100 l/min

Switching principle
5/3

Version
Pressurized Center

Compressed air connection output
Base plate ISO 5599-1

Working pressure min.
-0.95 bar

Working pressure max
16 bar

Sealing principle
Soft Seal

Pilot
External
Internal

Standards
ISO 5599-1

Pilot valve width
30 mm

Valve type
Spool valve

Blocking principle
Single base plate principle

Connection type
Plate connection

Compressed air connection input
Base plate ISO 5599-1

Compressed air connection, exhaust
Base plate ISO 5599-1

Flow conductance C
 14.1 l/(s*bar)

| | |
|--|---|
| Throttle with throttle | Oil content of compressed air min. 0 mg/m ³ |
| basic valve with electrical connector Basic valve without pilot valve | Oil content of compressed air max. 5 mg/m ³ |
| Frame size ISO 3 | Protection class with connection IP65 |
| Control pressure min. 3 bar | Duty cycle 100 % |
| Control pressure max. 16 bar | mounting screws with hexagon socket |
| Min. ambient temperature -20 °C | Mounting screw tightening torque 10 Nm |
| Max. ambient temperature 70 °C | Weight 0.85 kg |
| Min. medium temperature -20 °C | Housing material Aluminum |
| Max. medium temperature 70 °C | Seal material Acrylonitrile butadiene rubber |
| Medium Compressed air | Part No. 5813781000 |
| Max. particle size 50 µm | |

Technical information

* Note: ATEX version can be produced by combining the basic valve without coil with a series DO30 CNOMO pilot valve and an ATEX coil. ATEX ID: see ATEX coils catalog page.

The min. control pressure must be adhered to, since otherwise faulty switching and valve failure may result!

The pressure dew point must be at least 15 °C under ambient and medium temperature and may not exceed 3 °C .

The oil content of compressed air must remain constant during the life cycle.

Use only the approved oils from AVENTICS. Further information can be found in the "Technical information" document (available in <https://www.emerson.com/en-us/support>).

Dimensions

