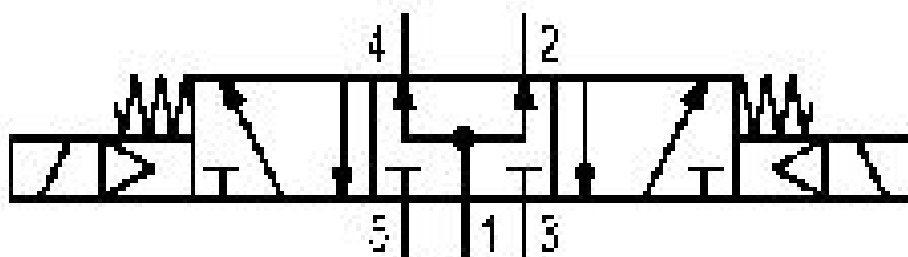


# 5/3-directional valve, Series 581, size 4

## 5814780100

ISO 5599-1, size 4, series 581

■  $Q_n = 5000 \dots 6000 \text{ l/min}$



### Technical data

Industry  
Industrial

Activation  
Electrically

Nominal flow  $Q_n$   
5000 l/min

Switching principle  
5/3

Version  
Pressurized Center

Compressed air connection output  
Base plate ISO 5599-1

Working pressure min.  
-0.95 bar

Working pressure max  
16 bar

Sealing principle  
Soft Seal

Pilot  
External  
Internal

ATEX  
ATEX  
II 2G Ex h IIC T6 Gb  
II 2D Ex h IIIC T85°C Db IP65

Standards  
ISO 5599-1

Pilot valve width  
30 mm

|   |  |
|---|--|
| <b>Valve type</b><br>Spool valve  | <b>Max. particle size</b><br>50 µm                                 |
| <b>Blocking principle</b><br>Single base plate principle                        | <b>Oil content of compressed air min.</b><br>0 mg/m <sup>3</sup>   |
| <b>Connection type</b><br>Plate connection                                      | <b>Oil content of compressed air max.</b><br>5 mg/m <sup>3</sup>   |
| <b>Flow conductance C</b><br>15.5 l/(s*bar)                                     | <b>Standard compressed air connection</b><br>according to ISO 5599 |
| <b>basic valve with electrical connector</b><br>Basic valve without pilot valve | <b>Protection class with connection</b><br>IP65                    |
| <b>Frame size</b><br>ISO 4  | <b>Duty cycle</b><br>100 %   |
| <b>Control pressure min.</b><br>3 bar   | <b>mounting screws</b><br>with hexagon socket                      |
| <b>Control pressure max.</b><br>16 bar  | <b>Mounting screw tightening torque</b><br>10 Nm                   |
| <b>Min. ambient temperature</b><br>-20 °C                                       | <b>Weight</b><br>1.28 kg   |
| <b>Max. ambient temperature</b><br>70 °C  | <b>Housing material</b><br>Aluminum                                |
| <b>Min. medium temperature</b><br>-20 °C  | <b>Seal material</b><br>Acrylonitrile butadiene rubber             |
| <b>Max. medium temperature</b><br>70 °C   | <b>Part No.</b><br>5814780100                                      |
| <b>Medium</b><br>Compressed air   |  |

## Technical information

\* Note: ATEX version can be produced by combining the basic valve without coil with a series DO30 CNOMO pilot valve and an ATEX coil. ATEX ID: see ATEX coils catalog page.

The min. control pressure must be adhered to, since otherwise faulty switching and valve failure may result!

The pressure dew point must be at least 15 °C under ambient and medium temperature and may not exceed 3 °C .

The oil content of compressed air must remain constant during the life cycle.

Use only the approved oils from AVENTICS. Further information can be found in the “Technical information” document (available in <https://www.emerson.com/en-us/support>).

## Dimensions

