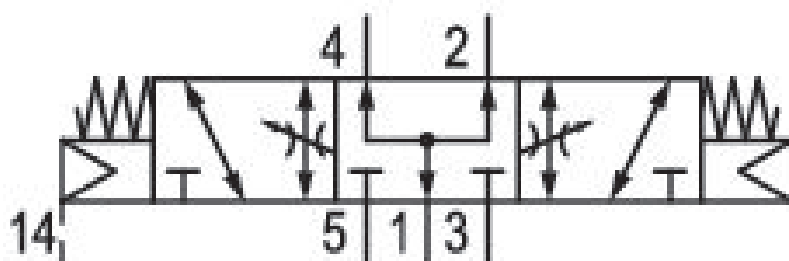


# 5/3-directional valve, Series 581, size 3

## 5813723000

ISO 5599-1, size 3, series 581

■  $Q_n = 4100 \dots 4800 \text{ l/min}$



### Technical data

Industry  
Industrial

Activation  
Electrically

Nominal flow  $Q_n$   
4100 l/min

Switching principle  
5/3

Version  
Pressurized Center

Compressed air connection output  
Base plate ISO 5599-1

Working pressure min.  
-0.95 bar

Working pressure max  
10 bar

Manual override  
with detent

Electrical connection type  
Plug

Electrical connection size  
Form B, industry

Sealing principle  
Soft Seal

Pilot  
External

Standards  
ISO 5599-1

|   |   |
|---|---|
| Pilot valve width<br>22 mm  | Max. medium temperature<br>50 °C                          |
| Valve type<br>Spool valve   | Medium<br>Compressed air                                  |
| Blocking principle<br>Single base plate principle                 | Max. particle size<br>50 µm                               |
| Connection type<br>Plate connection                               | Oil content of compressed air min.<br>0 mg/m <sup>3</sup> |
| Compressed air connection input<br>Base plate ISO 5599-1          | Oil content of compressed air max.<br>5 mg/m <sup>3</sup> |
| Compressed air connection, exhaust<br>Base plate ISO 5599-1       | Protection class with connection<br>IP65                  |
| Compressed air connection pilot exhaust<br>M5                     | Duty cycle<br>100 %                                       |
| Flow conductance C<br>14.1 l/(s*bar)                              | Typ. switch-on time<br>23 ms                              |
| Throttle<br>with throttle   | Typ. switch-off time<br>64 ms                             |
| basic valve with electrical connector<br>Basic valve without coil | mounting screws<br>with hexagon socket                    |
| Frame size<br>ISO 3   | Mounting screw tightening torque<br>10 Nm                 |
| Control pressure min.<br>3 bar                                    | Weight<br>1.01 kg   |
| Control pressure max.<br>10 bar                                   | Housing material<br>Aluminum                              |
| Min. ambient temperature<br>-15 °C                                | Seal material<br>Acrylonitrile butadiene rubber           |
| Max. ambient temperature<br>50 °C                                 | Part No.<br>5813723000                                    |
| Min. medium temperature<br>-15 °C                                 |   |

## Technical information

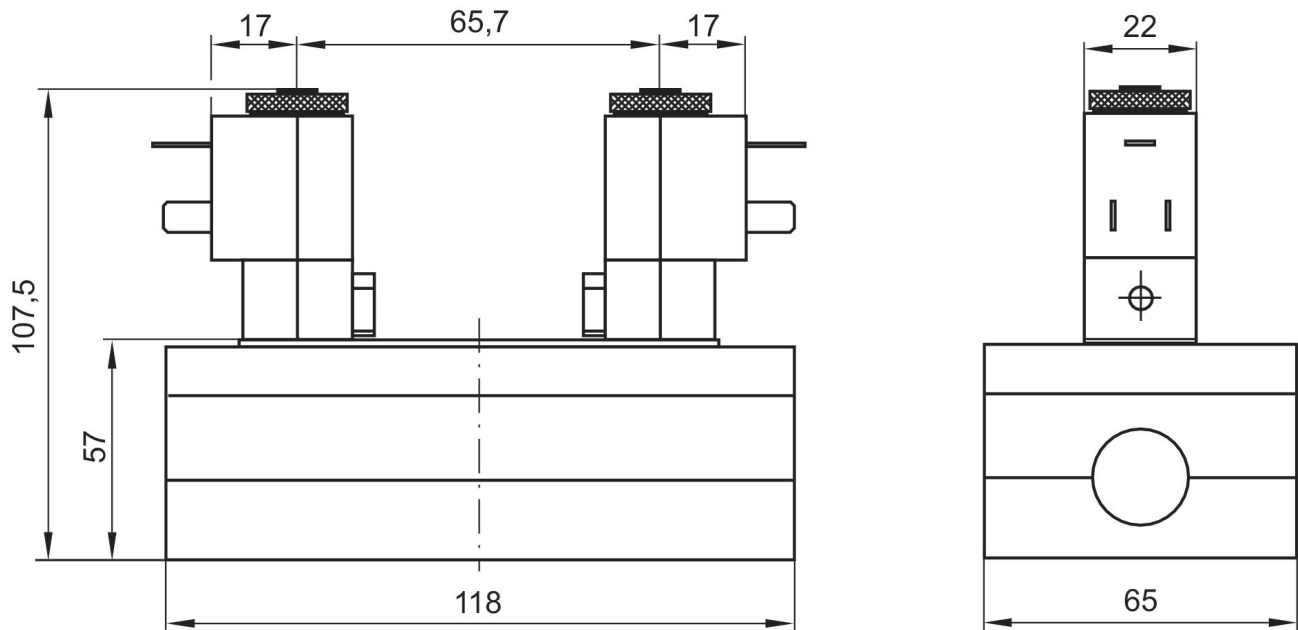
The min. control pressure must be adhered to, since otherwise faulty switching and valve failure may result!

The pressure dew point must be at least 15 °C under ambient and medium temperature and may not exceed 3 °C .

The oil content of compressed air must remain constant during the life cycle.

Use only the approved oils from AVENTICS. Further information can be found in the “Technical information” document (available in <https://www.emerson.com/en-us/support>).

## Dimensions



The pilot valves can be loosened and turned through 180°.