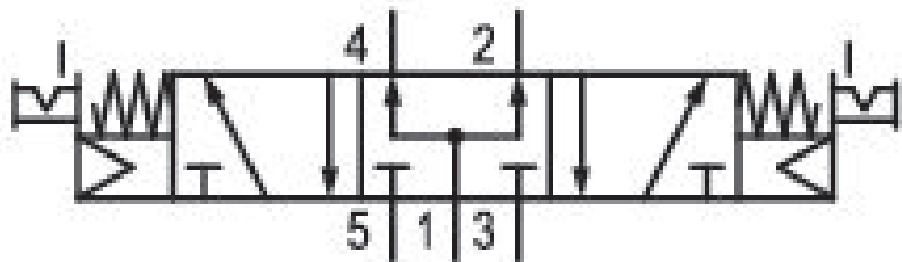


5/3-directional valve, Series 581, size 4

5814720000

ISO 5599-1, size 4, series 581

- $Q_n = 5000 \dots 6000 \text{ l/min}$



Technical data

Industry

Industrial

Activation

Electrically

Nominal flow Q_n

5000 l/min

Switching principle

5/3

Version

Pressurized Center

Compressed air connection output

Base plate ISO 5599-1

Working pressure min.

3 bar

Working pressure max

10 bar

Manual override

with detent

Electrical connection type

Plug

Electrical connection size

Form B, industry

Sealing principle

Soft Seal

Pilot

Internal

Standards

ISO 5599-1

Pilot valve width 22 mm	Max. medium temperature 50 °C
Valve type Spool valve	Medium Compressed air
Blocking principle Single base plate principle	Max. particle size 50 µm
Connection type Plate connection	Oil content of compressed air min. 0 mg/m ³
Compressed air connection input Base plate ISO 5599-1	Oil content of compressed air max. 5 mg/m ³
Compressed air connection, exhaust Base plate ISO 5599-1	Protection class with connection IP65
Compressed air connection pilot exhaust M5	Duty cycle 100 %
Flow conductance C 15.5 l/(s*bar)	Typ. switch-on time 30 ms
basic valve with electrical connector Basic valve without coil	Typ. switch-off time 74 ms
Frame size ISO 4	mounting screws with hexagon socket
Control pressure min. 3 bar	Mounting screw tightening torque 10 Nm
Control pressure max. 10 bar	Weight 1.44 kg
Min. ambient temperature -15 °C	Housing material Aluminum
Max. ambient temperature 50 °C	Seal material Acrylonitrile butadiene rubber
Min. medium temperature -15 °C	Part No. 5814720000

Technical information

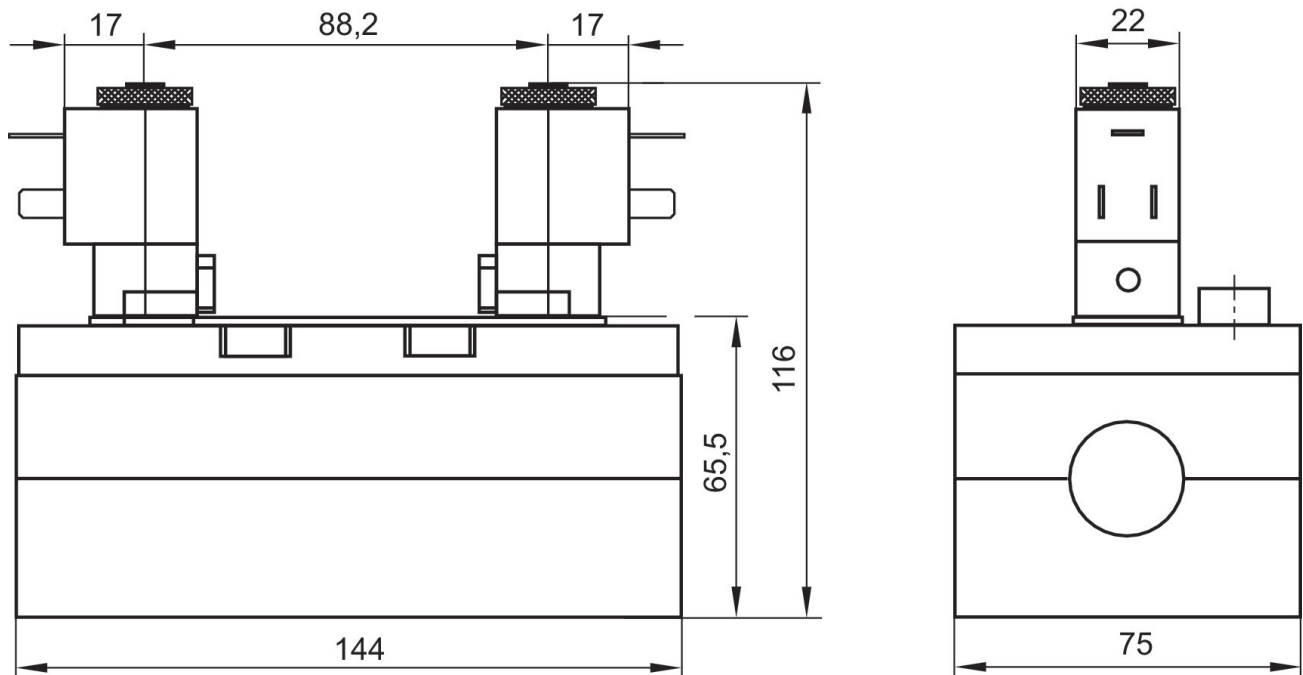
The min. control pressure must be adhered to, since otherwise faulty switching and valve failure may result!

The pressure dew point must be at least 15 °C under ambient and medium temperature and may not exceed 3 °C .

The oil content of compressed air must remain constant during the life cycle.

Use only the approved oils from AVENTICS. Further information can be found in the “Technical information” document (available in <https://www.emerson.com/en-us/support>).

Dimensions



The pilot valves can be loosened and turned through 180°.