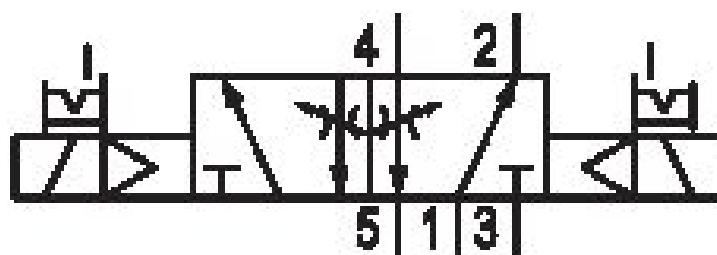


5/2-directional valve, Series 740

R432016661

Series 740 - inch

- Qn max. [[1100] l/min]



Technical data

Industry
Industrial

Activation
Electrically

Nominal flow Qn
700 l/min

Switching principle
5/2

Compressed air connection output
3/8"

Working pressure min.
1.5 bar

Working pressure max
10 bar

DC operating voltage
6 V

Voltage tolerance DC
-10% / +10%

Manual override
with detent

Electrical connection type
Plug

Electrical connection size
EN 175301-803, form A

Actuating control
Double Solenoid

Sealing principle
Soft Seal

Pilot
Internal

Valve type
Diaphragm poppet valve
Valve plug connector
Without valve plug connector
Throttle
with throttle

Connection type
Pipe connection
Blocking principle
Single base plate principle
Plate principle
Can be assembled into blocks
Can be assembled into blocks

Min. ambient temperature
-15 °C
Max. ambient temperature
50 °C
Min. medium temperature
-15 °C
Max. medium temperature
50 °C

Medium
Compressed air
Max. particle size
50 µm
Oil content of compressed air min.
0 mg/m³
Oil content of compressed air max.
5 mg/m³

Compressed air connection input
3/8"

Compressed air connection, exhaust
M14x1

Power consumption DC
2.7 W
Compatibility index
13
14

Duty cycle
100 %
Typ. switch-on time
40 ms

Connector standard
EN 175301-803:2006
Protection class with connection
IP65
Reverse polarity protection
Protected against polarity reversal

Mounting on manifold strip
PRS strip
Weight
0.505 kg

Housing material
Polyoxymethylene
Seal material
Acrylonitrile butadiene rubber

Part No.
R432016661

Technical information

ATEX optional: ATEX version can be produced by combining the basic valve without coil with an ATEX coil. ATEX ID: see ATEX coils catalog page.

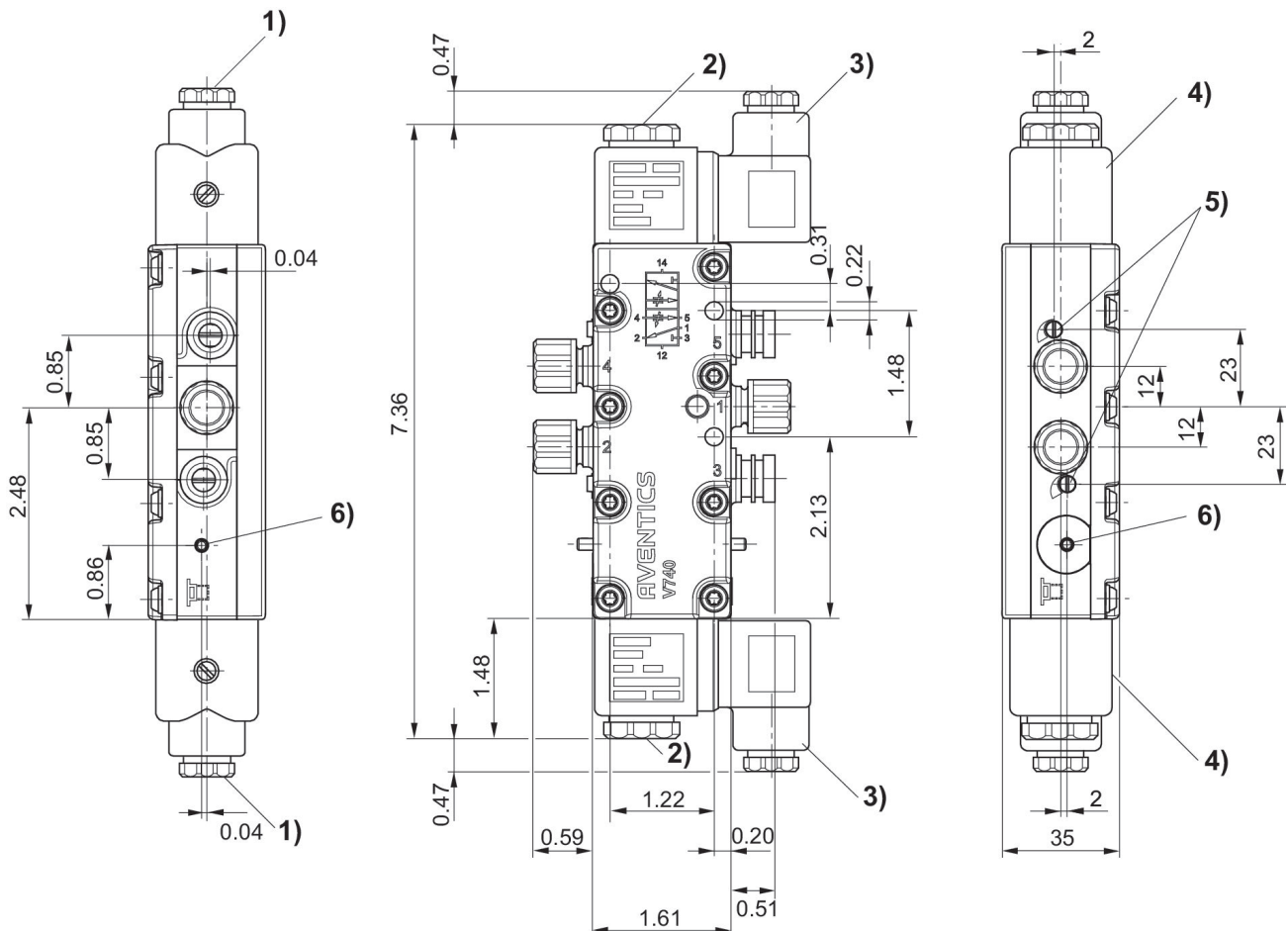
The min. control pressure must be adhered to, since otherwise faulty switching and valve failure may result!

The pressure dew point must be at least 15 °C under ambient and medium temperature and may not exceed 3 °C .

The oil content of compressed air must remain constant during the life cycle.

Use only the approved oils from AVENTICS. Further information can be found in the “Technical information” document (available in <https://www.emerson.com/en-us/support>).

Dimensions in inches



- 1) Gland fitting M16x1.5
- 2) M5 internal thread accessible under cap
- 3) Valve plug connector can be rotated at 90° intervals
- 4) Coil can be plugged at 45° intervals
- 5) Flow control screw for exhausts 5 (R) and 3 (S)
- 6) Manual override and position indicator