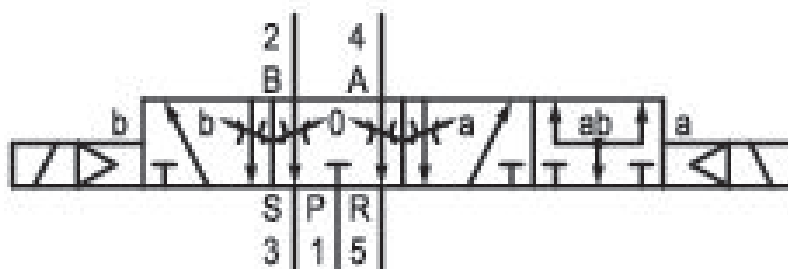


5/4-directional valve, Series 740

R432016668

Series 740 - inch

■ Qn max. [[1100] l/min]



Technical data

Industry
Industrial

Activation
Electrically

Nominal flow Qn
700 l/min

Switching principle
5/4

Version
Pressurized Center

Compressed air connection output
3/8"

Working pressure min.
3 bar

Working pressure max
10 bar

DC operating voltage
24 V

Voltage tolerance DC
-10% / +10%

Manual override
without detent

Electrical connection type
Plug

Electrical connection size
EN 175301-803, form A

Sealing principle
Soft Seal

Pilot
Internal

Valve type
Diaphragm poppet valve
Valve plug connector
Without valve plug connector
Connection type
Pipe connection

Blocking principle
Single base plate principle
Plate principle
Can be assembled into blocks
Can be assembled into blocks

Min. ambient temperature
-15 °C
Max. ambient temperature
50 °C
Min. medium temperature
-15 °C
Max. medium temperature
50 °C

Medium
Compressed air
Max. particle size
50 µm
Oil content of compressed air min.
0 mg/m³
Oil content of compressed air max.
5 mg/m³

Compressed air connection input
3/8"

Compressed air connection, exhaust
M14x1

Power consumption DC
2.7 W
Compatibility index
14
Duty cycle
100 %

Typ. switch-on time
20 ms
Typ. switch-off time
54 ms

Connector standard
EN 175301-803:2006
Protection class with connection
IP65
Reverse polarity protection
Protected against polarity reversal

Mounting on manifold strip
PRS strip
Weight
0.551 kg

Housing material
Polyoxymethylene
Seal material
Acrylonitrile butadiene rubber

Part No.
R432016668

Technical information

ATEX optional: ATEX version can be produced by combining the basic valve without coil with an ATEX coil. ATEX ID: see ATEX coils catalog page.

NOTE: In order to ensure the operating function of the valve, do not fall below the minimum operating pressure of $[[3]]$ bar!

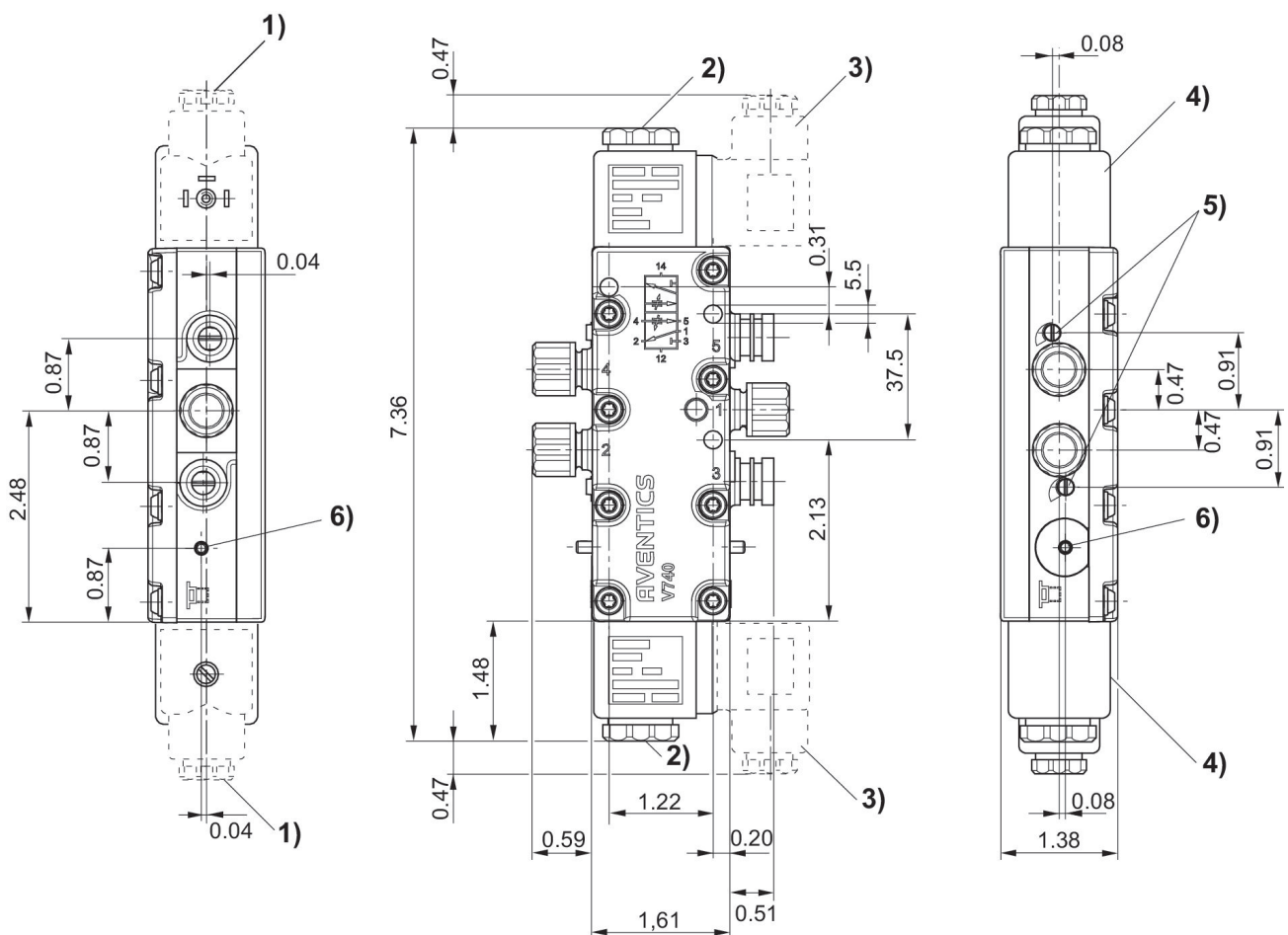
The min. control pressure must be adhered to, since otherwise faulty switching and valve failure may result!

The pressure dew point must be at least $15\text{ }^{\circ}\text{C}$ under ambient and medium temperature and may not exceed $3\text{ }^{\circ}\text{C}$.

The oil content of compressed air must remain constant during the life cycle.

Use only the approved oils from AVENTICS. Further information can be found in the "Technical information" document (available in <https://www.emerson.com/en-us/support>).

Dimensions in inches



1) gland fitting M16x1,5 2) M5 internal thread accessible under cap 3) el. connector can be fixed at 90° intervals 4) coil can be mounted at 45° intervals 5) throttle screw for exhausts 5 (R) and 3 (S) 6) manual override and position indicator