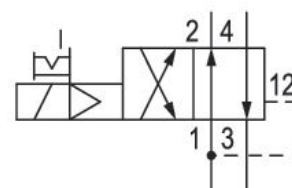


4/2-directional valve, Series 840

R432008663

Series 840 - inch

- Qn max. [[200] l/min]
- 4/2 diaphragm poppet valves with plastic housing



Technical data

Industry
Industrial

Activation
Electrically

Nominal flow Qn
200 l/min

Switching principle
4/2

Compressed air connection output
1/4" NPTF

Working pressure min.
1.5 bar

Working pressure max
10 bar

Pilot valve width
22.5 mm

Voltage tolerance DC
-10% / +15%

Manual override
with detent

Electrical connection type
Plug

Electrical connection size
EN 175301-803, form C

Actuating control
Single Solenoid

Sealing principle
Soft Seal

Pilot
Internal

Valve type
Diaphragm poppet valve

Connection type
Pipe connection

Return
with air spring return

Control pressure min.
1.5 bar

Max. medium temperature
50 °C

Control pressure max.
10 bar

Medium
Compressed air

Min. ambient temperature
-15 °C

Max. particle size
50 µm

Max. ambient temperature
50 °C

Oil content of compressed air min.
0 mg/m³

Min. medium temperature
-15 °C

Oil content of compressed air max.
1 mg/m³

Compressed air connection input
1/4" NPTF

Compressed air connection pilot exhaust
Ø 4,5

Compressed air connection, exhaust
1/4" NPTF

Holding power AC 50 Hz
2.2 VA

Duty cycle
100 %

Holding power AC 60 Hz
1.9 VA

Typ. switch-on time
12 ms

Switch-on power AC 50 Hz
3 VA

Typ. switch-off time
12 ms

Switch-on power AC 60 Hz
3.6 VA

Pilot valve width
22.5 mm

Reverse polarity protection
Protected against polarity reversal

Connector standard
EN 175301-803, form C

Mounting on manifold strip
PRS strip

Protection class with connection
IP65

Weight
0.156 kg

Housing material
Polyoxymethylene

Part No.
R432008663

Seal material
Acrylonitrile butadiene rubber

Technical information

Versions with voltage of less than 50 V DC do not have a protective ground.

The maximum operating pressure depends on the ambient temperature. The following values are applicable -15 °C ... 50 °C = Operating pressure [[1.5] bar] ... [[8] bar] possible -15 °C ... 40 °C = Operating pressure [[1.5] bar] ... [[10] bar] possible.

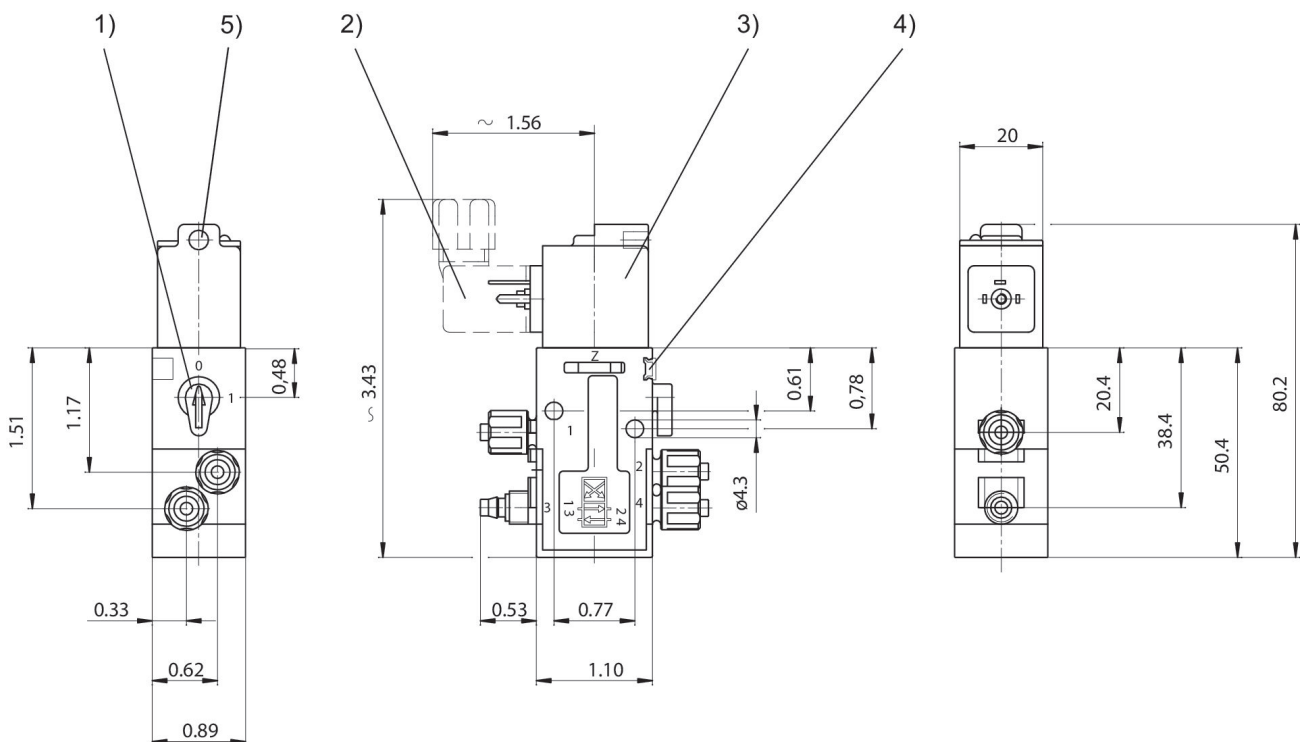
The min. control pressure must be adhered to, since otherwise faulty switching and valve failure may result!

The pressure dew point must be at least 15 °C under ambient and medium temperature and may not exceed 3 °C .

The oil content of compressed air must remain constant during the life cycle.

Use only the approved oils from AVENTICS. Further information can be found in the "Technical information" document (available in <https://www.emerson.com/en-us/support>).

Dimensions in inches



- 1) Manual override 2) Valve plug connector 3) Coil can be rotated at 180° intervals
4) Mounting space for name plate 5) Hole for M5 fitting or silencer \varnothing 4.5 mm